

Friends of the White Geese

Post Office Box 391412
Cambridge, MA 02139

Cell: 617-283-7649
E-Mail: boblat@yahoo.com

June 6, 2017

City Manager Louis A. DePasquale
City Hall, 795 Massachusetts Avenue
Cambridge, MA 02139

City Council, City of Cambridge, c/o City Clerk
City Hall, 795 Massachusetts Avenue
Cambridge, MA 02139

Gentlemen / Ladies

RE: Balance of destruction by the April 24, 2017 vote (Order 1) by City Council to destroy at Magazine Beach, Communication 9 in a series.

1. Introduction.
- A. Cambridge City Hall, Preamble.
- B. Phil Barber.
- C. Gamesmanship on the part of the destroyers.
- D. General.
- E. Word Games.
- F. Past errors should be corrected, NOT EXPANDED.

Map index, sections 2 to 7.

2. Northeast corner of Playing Fields.
3. Parking lot of Playing Fields.
4. Southern Edge of Playing Fields.
5. The Starvation Wall.
6. The middle of the playing fields. Poison usage. Drainage for poisons that should not be used.
7. Northern Edge of Playing Fields.

Index to Maps, sections 8 to 12

8. Northeast Hill, Northwest playing fields.
9. Magnificent Grove on Hill, Overhanging Playing Fields.
10. Southeast Hill.
11. Hill, Parking Lot.
12. Hill, West Central.
13. Bath House Northeast, MicroCenter South.
14. Swimming Pool West, Across from MicroCenter Parking Lot.
15. Boat Club Area.
16. West of Boat Club.
17. Conclusion.

Appendices: Original Cambridge Conservation Commission submittal marked up to point out the location of areas 1 to 13 in this analysis.

1. Introduction.
- A. Cambridge City Hall, Preamble.

A relevant, and true, comparison that can be made to Order 1 of April 24, 2017, is to compare the 54 trees the City Council has supported destroying at Magazine Beach to trees on the City Hall grounds, specifically to the grove directly behind the rear entrance to City Hall, which shows behind these words..

I was recently very much impressed by this grove. Then it came to me.

This is a good grove, BUT its individual trees are inferior to a significant number of trees at Magazine Beach which the Cambridge City Council voted to destroy by Order 1. The reality is that the skillful word games used by the DCR in its color amendment to its destruction plans, to justify outrageous destruction are **fraud, fraud, fraud**. Key words in Order 1 converted skillfully reworded **fraud in the DCR color amendment** to a statement

JUN 6 '17 PM 2:39 City Manager

of an **absolute fact**. **Rewording fraud as absolute fact does not change reality**. I presume this order with the fraud was written by the Cambridge Development Department and not by the signers of the order.

In any case, A SIGNIFICANT NUMBER OF THE TREES THE CITY COUNCIL VOTED TO DESTROY ON MAGAZINE BEACH ARE SUPERIOR TO THE TREES AT THE REAR OF CITY HALL. It is irresponsible and wasteful to destroy them.

This letter updates my previous reports and adds portions of the Magazine Beach destruction not previously provided to the City Manager and City Council. I analyze every parkland tree which would be destroyed by Order 1.

Core destructive behavior, the really bad stuff, is in sections 2, 3, 5 through 12, 14 and 16, **especially sections 5 through 12 and 14**.

This does not mean that other sections should be ignored because they also analyze very real and uncalled for destruction. This just means that these section are truly horrible.

B. Phil Barber.

I have previously passed on to the City Council and City Manager the wisdom of Phil Barber with regard to destruction proposed on the Charles River. Phil's analysis in this letter is specifically with regard to Section 9, below. It however, has general relevance to the destruction called for in Order 1 of April 24, 2017.

It's certainly an outrage to destroy entire stands because of some deadwood or unsightly growth. I see this all too often, that trees that have valiantly survived the elements and abuse are cut down simply because someone judges them not to be sufficiently aesthetic. I imagine people who lack the awareness that these are living beings deserving of care simply see the bottom line, that it's cheaper to ruin an irreplaceable old tree and put in a new one, as if it didn't matter.

I've also seen city workers on the job in the various little parks and public landscaping hacking away willy-nilly at the vegetation blissfully unaware of the difference between weeds and plantings. The lack of concern, and of knowledge, is appalling but such is our time.

C. Gamesmanship on the part of the destroyers.

This letter started as a completion of my prior analyses of the destruction supported by the Cambridge City Council in order 1 of April 24, immediately after City Councilors led a rally on the City Hall steps praising their own "environmentalism."

As I have analyzed the original official DCR black and white submittal to the Cambridge Conservation Commission in comparison to the subsequent color package with the fraudulent word games, it has become clear that the proposed destruction in the areas I have previously reported has grown.

While destruction has gotten more irresponsible in the area claimed to be under the protection of the fake neighborhood association associated with the development department, **DESTRUCTION IN THE BOAT CLUB AREA WITH MEANINGFUL PROTECTION HAS DROPPED FROM TWO TREES TO ZERO**.

Those two trees were dropped in the word game / propaganda color package. This reversal is shown in section 15, the Boat Club area.

There are trees which may accurately be described as dead or dying in the area proposed to be destroyed by Order 1 of April 24, 2017. This report points them out. The dead and dying are almost all outside the core areas of outrageous destruction. Most of the dead and dying are around the playing fields.

The DCR includes one area in the original proposed destruction which really is not part of the parklands, the front yard of the pool's bathhouse. In the Color package with the fraudulent word usage, the DCR adds two trees in front of MicroCenter. By including trees not really in the parkland in the proposal, i.e. in front of the

swimming pool bathhouse and MicroCenter, the DCR artificially increases the number of supposed sick and dying trees disproportionately. This is yet another game.

This tiny number of dead or dying trees, in no way, justifies the massive destruction supported by Order number 1 of April 24, 2017, in spite of the DCR's skillful word game fraud in the color propaganda package being reworded in Order 1 as absolute truth.

Almost all of the dead and dying trees are at the playing fields, the beginning of my analysis. The parkland, from the east of the pedestrian overpass to the boat club, has the vast majority of doomed trees. These doomed trees are almost all excellent, especially when you ignore the areas which have been improperly added to the parkland.

This report goes through the entire destruction package, including the areas which are not parklands and should not be included in parklands work. The core, really offensive, destructive behavior is in sections 2, 3, 5 through 12, 14 and 16, **especially 5 through 12 and 14**. The other sections definitely involve the destruction of trees which should not be destroyed.

And we include maps both from the properly filed black and white package and the subsequent color package with its word game fraud.

D. General.

The plans in this package all have north at the top. All photographs are my work. My photography has taken great care in finding the correct trees to photograph. My analysis of the plans, however, indicates that it is a nightmare to exactly match trees in the north part of the playing fields and in much of the hill. I have done my best and I have done multiple reshoots in my attempt to determine what the DCR is talking about.

Please look at this entire package, with photos and comparison between the two DCR plans to determine the very great lack of responsibility to which the city council was falsely led by Order 1.

Please, accordingly, end the destruction.

In particular, please look at the responsible analysis in Section 9, Area 6 by Phil Barber. Mr. Barber's analysis is that of a normal, responsible, knowledgeable human being. This is strikingly different from what you are **dealing** with in the DCR plans.

The irresponsible plans for destruction of the magnificent grove on the hill which dominates the playing fields have gone from destroying 10 trees, called 3 to destroying 8 trees, called 2.

Phil Barber's analysis is that, out of the 10, there is 1 tree that should be destroyed. He reports there is careful pruning called for, but not additional full chopping down. Phil does concur with the DCR analysis of multiple trunks for one particular type of tree.

While the single tree analysis seems to be technically correct, "technically correct" has commonly been used as a technique of fraud. Mr. Barber's analysis is responsible behavior. The "planners" that human beings are dealing with altogether too often warp word games into something that is silly to distinguish from fraud.

If "technically correct" language knowingly communicates a different meaning to average human beings who hear normal meanings for that language, usage of the technical language without explanation of the difference from normal language is fraud.

I use the language of normal human beings and I call fraud fraud. I do not go into a long explanation which explanation, to the normal human being, is silly.

The chop, chop, chop mentality of the Department of Conservation and Recreation is one reason why the legislature destroyed the Metropolitan District Commission – to protect, among other things, the Charles River from the horribly irresponsible "planners" of the MDC. Those horribly irresponsible "planners" moved to the DCR. Too many of those "planners," are now working in the DCR. They, with the bad Cambridge

Development Department and others in the City of Cambridge, have just destroyed hundreds of trees east of the BU Bridge.

In my analysis below, I, with great distress, attribute the proposal to destroy all these excellent trees to being destruction supported by the Cambridge City Council. I think fraud is at the basis of Order Number 1 of April 24, 2017. But Order Number 1 of April 24, 2017, taken immediately after the self deification for environmental purposes on the steps of City Hall, happened.

Skillfully worded fraud in the DCR color / propaganda map converted to "absolute truth" in Order 1 was the basis of that vote, but the vote was taken. That outrageous vote should be reversed.

I have analyzed the outrage east of the BU Bridge in "Memorial Drive Destruction . . . , Final Cut." This video includes very limited analysis west of the BU Bridge.

I have provided the City Council and City Manager individual DVDs of this analysis, and have provided record copies. The analysis is posted at <https://www.youtube.com/watch?v=pTplCCEJP7o>.

I have supplemented this analysis with "Nature and Beauty Ripped out along the Charles River", posted at <https://youtu.be/dWyCdcWMuAA>, which goes into analysis of the supposed improvements east of the BU Bridge and shows how those supposed improvements in no way justify the outrage accomplished.

Core destructive behavior is in sections 2, 3, 5 through 12, 14 and 16, **especially 5 through 12 and 14.**

E. Word Games.

There are significant and key trees which the DCR and Cambridge want to destroy that they admit are healthy and have not reached their peak beauty. The DCR and Cambridge just want to destroy them.

The color / propaganda package represents the second phase of fighting for destruction. It uses word games. It claims that, if a tree has reached peak perfection plus a day, the DCR and Cambridge have a right to destroy it. The euphemism is "decline." Translation: while excellent, it only has another 50 years to live (or whatever). This outrageous word game is the sole supposed justification for a very significant part of this outrage. This outrage will devastate the river side of Memorial Drive from east of the pedestrian overpass to the Boat Club.

This outrage was based on skillfully worded fraud. The writers of Order 1, whether the named writers or the Cambridge Development, took skillfully worded fraud and converted the skillfully worded fraud to call the skillfully worded fraud an absolute (and false) "truth."

This current report combined with the previous submittals, I hope, will persuade the City of Cambridge to reverse City Council Order Number 1 of April 24, 2017, and to get rid of the very terrible Department of Conservation and Recreation in favor of the Department of Transportation.

MassDOT is by no means perfect. MassDOT has been persuaded by DCR and Cambridge Development Department individuals to do a limited number of dumb things. The DCR and Cambridge Development Department approach being perfect in the wrong direction.

F. Past errors should be corrected, NOT EXPANDED.

Additionally, however, there are outrages done by Cambridge and the DCR which need to be reversed. Cambridge and the DCR started dumping poisons on the banks of the Charles in Cambridge as part of the 2000s outrage. Cambridge and the DCR want to expand use of poisons on the banks of the Charles.

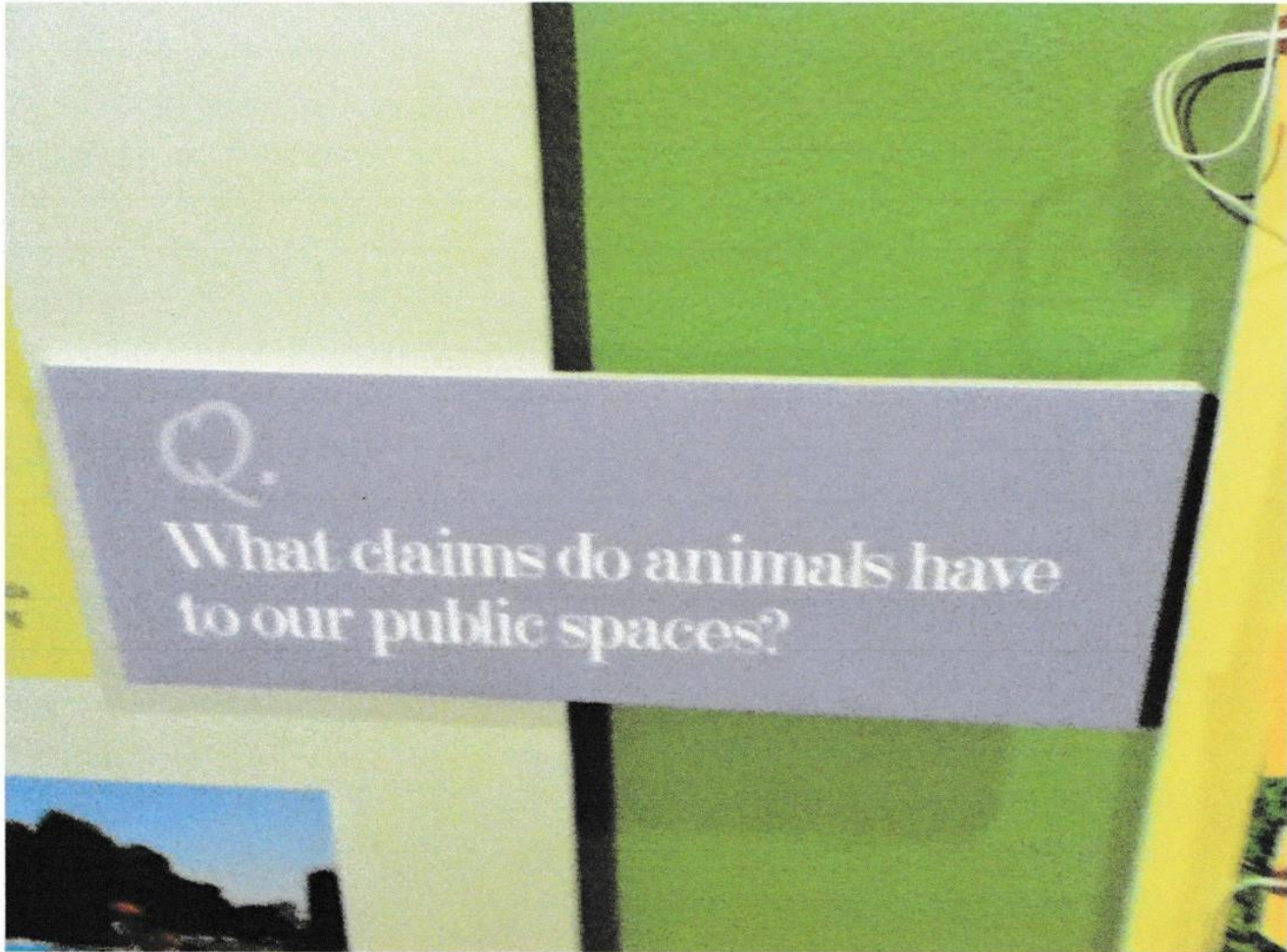
The reasons? NEVER EXPLAINED. They just like poisons.

Cambridge and the DCR walled off the Playing Fields from the Charles River, making the playing fields, for all practical purposes, ten miles from the banks of the Charles River. Multiple lies were involved.

The real reason? Heartless animal abuse.

The Charles River White Geese are loved by decent human beings, and people have commuted from the suburbs to admire them. The Charles River White Geese have lived on the banks of the Charles River for 36 years, feeding and sleeping most of that time at the Playing Fields.

The DCR with the support of the Cambridge Development Department contends that there is no room on the Charles River for free animals. Mankind has destroyed habitat throughout man's world. The DCR and the Cambridge Development Department want to end the last undestroyed habitat on the tiny areas of riverfront left where free animals remain.



The plaque in the photo was displayed as part of a propaganda piece in the Cambridge City Hall Annex.

As part of this mentality, the DCR and Cambridge have already destroyed 3.4 acres or more of the (to quote the City Council) "irreplaceable Silver Maple Forest" at Alewife, 3.4 acres of virgin habitat, while the Cambridge City Council was yelling at developers obeying municipally created zoning in another part of the Silver Maple Forest.

The Charles River White Geese are by no means the only free animals being attacked. They, simply, are the most visible, and they are highly popular and valuable.

The DCR and the Development Department want, as a matter of policy, to kill all resident animals or drive them away. So they are deliberately starving the Charles River White Geese. That is the reason for the wall. That is the reason for stone barriers installed in the area where they destroyed hundreds of trees, to prevent access to food. That is the reason why the entrance to their forced ghetto, the Destroyed Nesting Area, is now physically blocked. To prevent access to food under Memorial Drive.



By contrast, while MassDOT is less than perfect, the DCR and the Cambridge Development Department and friends approach perfection in the wrong direction.

End the current Magazine Beach outrage, reverse the outrages of the 2000s, including dumping of poisons, the creation of the bizarre introduced vegetation / wall separating the Charles and its shore, and the other aspects of heartless animal abuse, including items spelled out in my letter to MassDOT.

Get rid of the DCR.

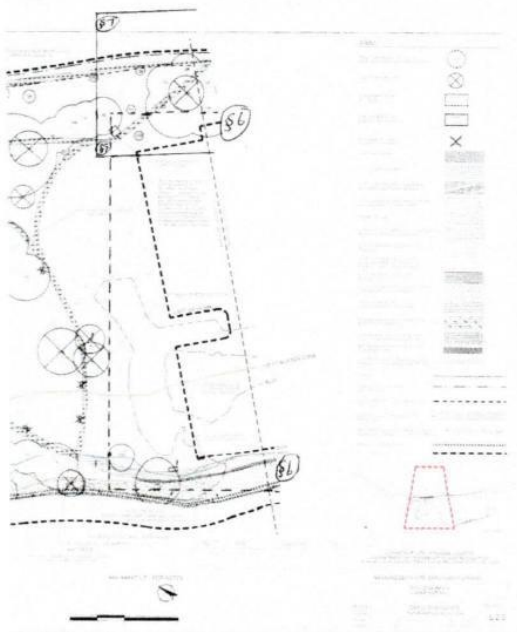
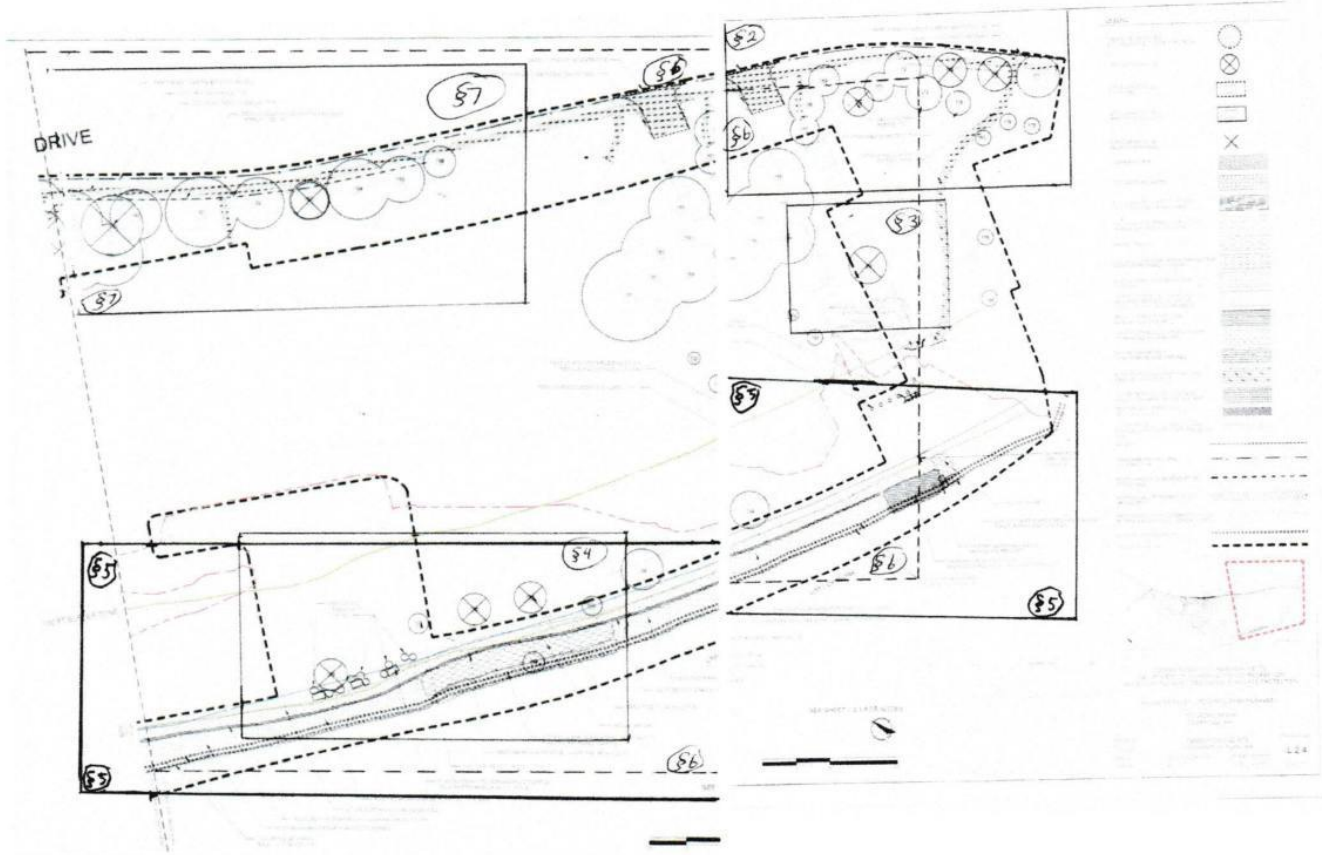
Get rid of the poisons. Get rid of the heartless animal abuse BY WHATEVER MEANS. Get rid of destruction which provides value ONLY for the people paid to do the destruction and for the people paid to "repair" destruction which should not have been done in the first place. Get rid of the nonsensical word games.

Get rid of the DCR.

And, hopefully, the City Manager will clean up the outrage in the Development Department with its controlled fake protective groups.

Index to maps, Sections 2 to 7.

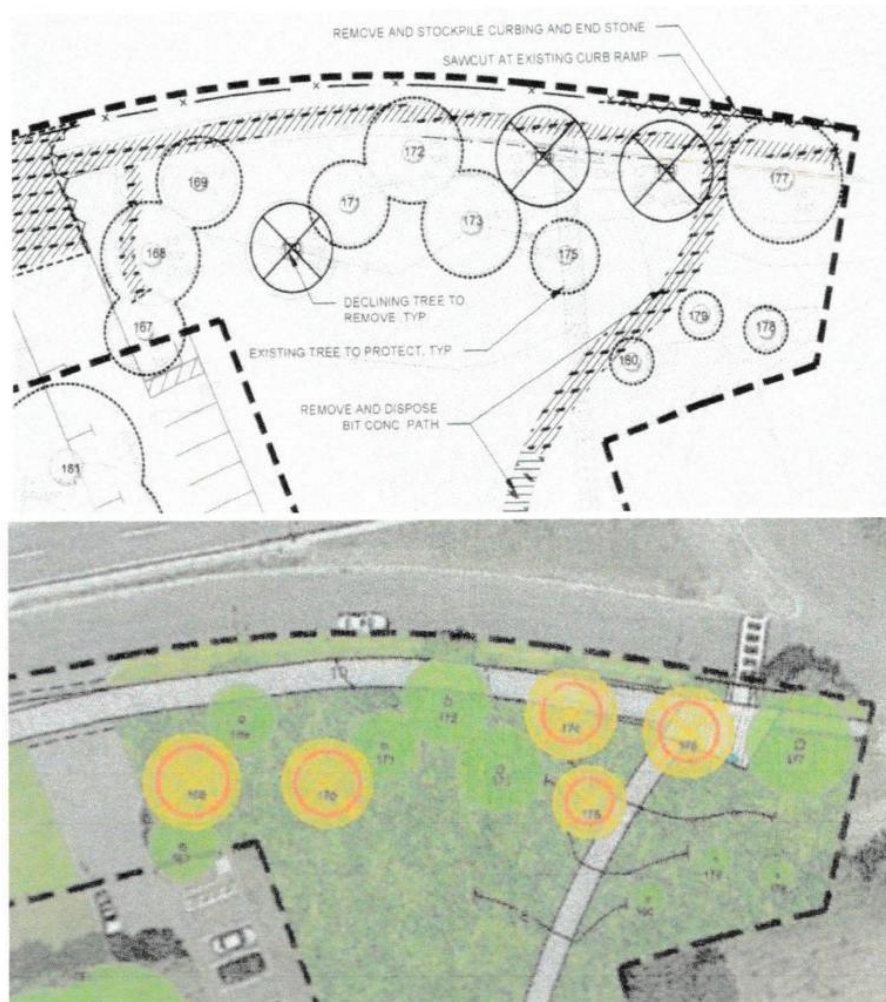
Here are the two halves of the Black and White Plan for the Playing Fields. Marked on the map are portions of the map which show in sections of this report from section 2 to 7.



The eastern portion of the map for the hill
also reflects section 6 and 7.

2. Northeast corner of Playing Fields.

A. Maps.



B. General Analysis.

There are two changes between the documents.

One, hopefully, is inconsequential. The two doomed trees at the northeast corner appear to be moved slightly east. I hope this is just a correction. It is my understanding that this destruction is primarily intended to create a fancy entrance.

In contrast to the mentality of the incompetents making these decisions, trees make nice parts of fancy entrances.

There are two added trees for destruction. One tree south of the two at the upper right corner, one tree in the middle of three to the right of the entrance to the parking lot.

Fraudulent word games start showing themselves here.

C. Photos.

(1) Northeast Corner.

Here is the northeast corner of the playing field area. To the right of the camera is the MWRA pollution control plant. The red structure beyond the trees is Memorial Drive going over the traffic circle barely visible under it. From here, to the right, the roads connect to the BU Bridge.



There is a grove of four trees at this corner. The DCR wants to destroy three.

Below right are photos of the two easternmost trees at the street. In the first photo, the left tree is not to be destroyed. The right tree in the photo and the plan is condemned.

The second photo to the right gives a view of the doomed tree from the sidewalk. Look at the magnificent protection for pedestrians from each of this pair of trees, doomed and not doomed.



Below is a view of that tree from the rear with the second doomed tree in the distance (third from the right in the plan).

And to the right below is a second photo of the second doomed tree. The second doomed, the third from the right, is clearly inferior to the second from the right.

At the top of the next page is the southern most tree of the four, with this latter tree in the background. This is the tree that was added in the word game edition.



This is a pretty good tree, young but pretty good.

In this four tree grove there is one that is clearly dead, front, 3d from the right.

Why destroy three? One is dead.

The propaganda piece says the other two only have 50 years (or the equivalent) left to live. One is in middle life. The other is young.

The DCR and Cambridge consider that adequate excuse to destroy them.

Reality: The DCR and Cambridge want a fancy entrance here. The DCR and Cambridge routinely destroy trees for fancy plans.

Reality of reality. Remember why these DCR planners got the MDC destroyed? Make work for contractors. Their contractor buddies like to get paid for destroying trees. And they like to get paid for putting in "replacements" for trees they should not have destroyed in the first place.

Plus, is the Cambridge Development Department so overstaffed that it is destroying healthy trees as make work for itself?

I have a solution. Save money and the environment by pruning planners.

(2) Trees to the east of the entrance to the playing field parking lot.

Moving along, the DCR and friends want to destroy two of the four trees east of the entrance to the parking lot.

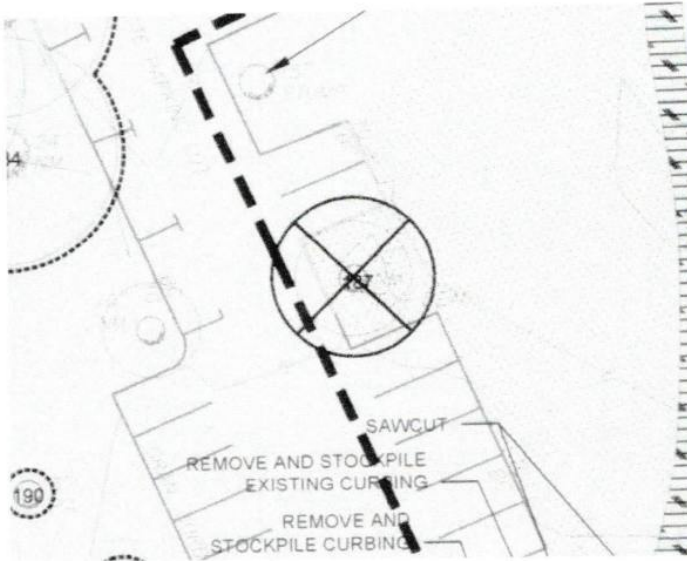
Taken in October 2016, the tree on the left below is the western most of the trees to be destroyed at the entrance. It certainly looks dead.

The tree in the photo to the right is the middle of the three trees which show east of the entrance. It has quite a few leaves on it. It was added in the word game change. Why not give it a chance?



3. Parking lot of Playing Fields.

A. Maps.



B. General Analysis.

One tree is proposed to be destroyed. For the life of me, I cannot see any sense in destroying it.

C. Photo.

This tree is doomed.

It only has 50 years left to live, translating from the propaganda piece.

Outrageous.

Absolutely.

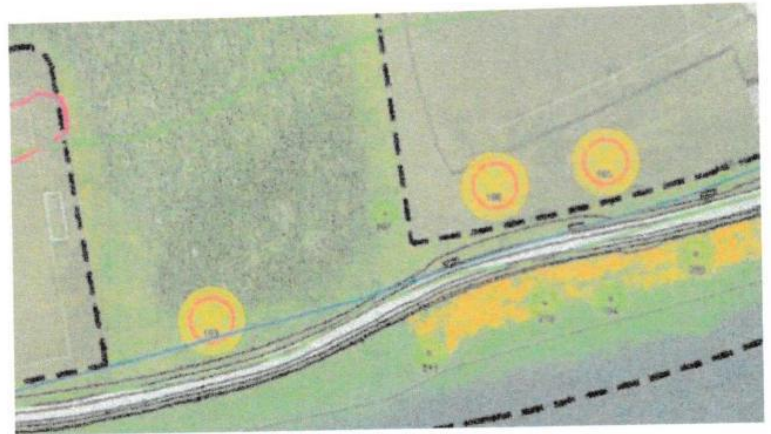
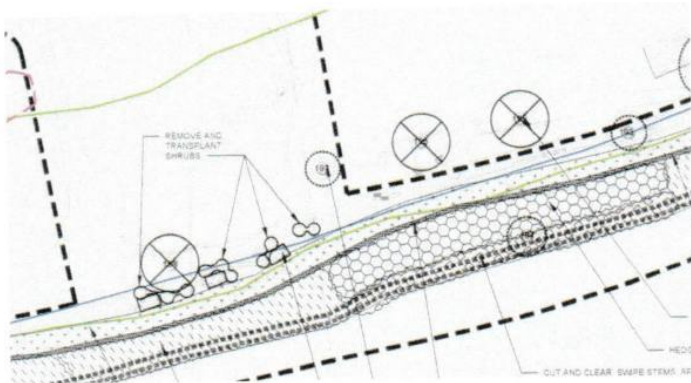


The DCR and Cambridge have contractors who need to make money.

The DCR and Cambridge have planners who need to claim they are working.

4. Southern Edge of Playing Fields.

A. Maps.



These three trees, all apparently planted in the 2000s outrage definitely look dead. Their existence, contrary to the sales pitch, does not justify destroying the 54 trees supported by order 1.

C. Photos.

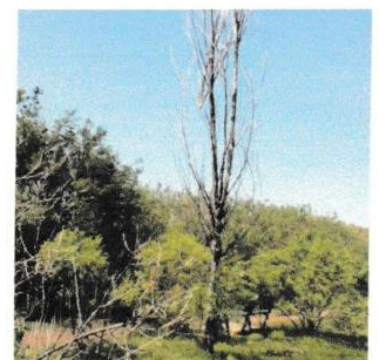
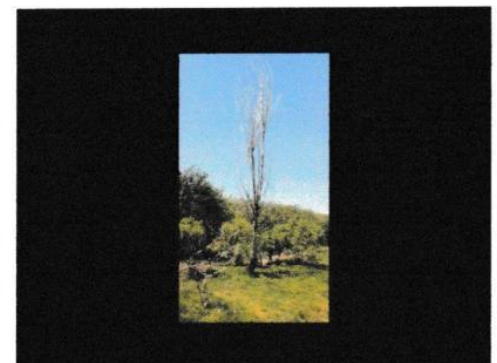
To the right are individual pictures. All were clearly planted in the 2000s outrage.

Below is a group picture.

One tree is in the foreground. One is skinny and to the right, a sort of a bean pole in front of the right bush. The third is visible over the bushes.

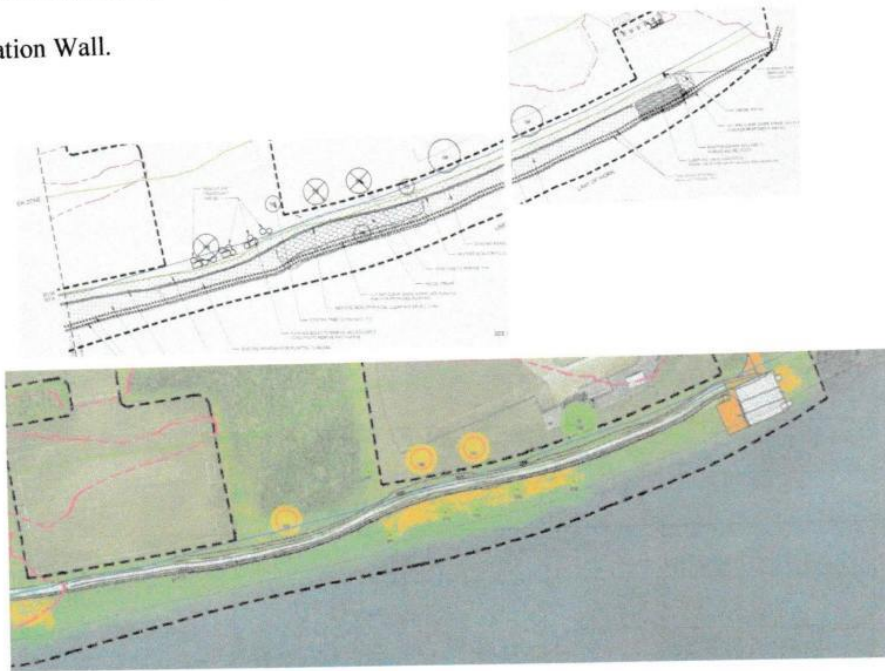
These three and the two dead near the sidewalk make five dead or dying trees.

That is not grounds to destroy 54.



5. The Starvation Wall.

A. Maps.



B. Analysis.

Section 1F, above, succinctly summarizes a major part of the problem.

The DCR admits that the Starvation Wall introduced by Cambridge and the DCR in the 2000s is a failure to the extent it has any purpose except heartless animal abuse, deliberately starving the Charles River White Geese by keeping them from their food and home of most of the last 36 years.

The key lie in the establishment of this 16 foot high wall of introduced vegetation was in the Charles River "Master Plan," which promised a lawn to the river. The promise of a lawn to the river was amended after the fact. During the planning on the Charles River, the DCR constantly demanded nothing but water related activities on the Charles River. So the DCR and Cambridge turned the Playing Fields by this wall into an area which might as well be ten miles from any body of water whatsoever.

The DCR admits that people do not use the area next to the Starvation Wall because it is so foreboding. The DCR promises to temporarily trim the wall so that the Charles River can be seen. The key to the lie is that the DCR DOES NOT MAINTAIN ITS PROPERTY. If the DCR maintained its property, this wall would not be 16 feet higher OR MORE. The DCR did not use "temporarily" in its promise. I live in reality.

The falsely named Charles River "Conservancy" gave another excuse for the Starvation Wall. They conducted a swim in to brag that it would improved swimming in the Charles River. Since people are kept from access to the Charles River, the "swimming" argument was a big a lie as calling this entity a "Conservancy." To my knowledge, the entity has routinely rubber stamped whatever outrage the DCR is fighting for.

The responsible thing to do is to remove the Starvation Wall down TO THE ROOTS, AND TRASH THE ENTIRE THING. The DCR claims it cannot do this. Looking at the destruction of hundreds of trees between the BU and Longfellow Bridges with the removal of massive amounts of dirt, this latest claim is obviously just another flat out lie. The results of massive dirt removal is shown in "Nature and Beauty . . ." link below.

Please see our videos for detailed proof of this latest flat out lie: "The Destruction of Memorial Drive . . . Final Cut" may be viewed at <https://www.youtube.com/watch?v=pTPlCCEJP7o>. The City Council and City Manager have been provided one DVD record copy each and each member of the City Council has been provided his / her individual copy. For prove of the flat out lie in claimed "improvements," please see our video "Nature and Beauty Ripped out along the Charles River" at <https://youtu.be/dWyCdcWMuAA>.

C. Photos.

Here are file photos showing this outrage.

Here is a view from the Boston side in 2011. The Starvation Wall has only gotten worse.

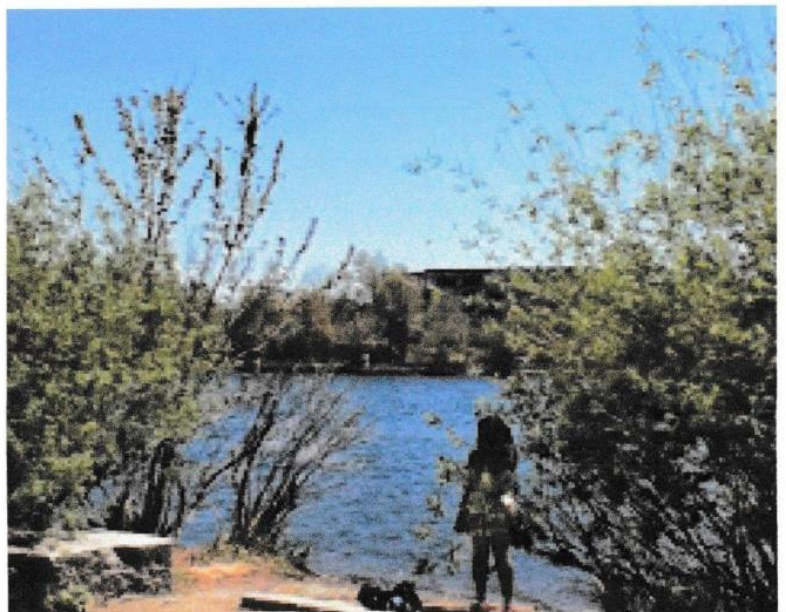


The Charles River White Geese, during the initially implementation of this outrage had the nerve to go through the opening as it then existed and FEED. Going through the opening was taken care of with massive construction of bushes ONLY in such a location as to prevent the Charles River White Geese from getting to food. The land side of the only opening in the Starvation Wall.



My notes on this photo read "2012?".

The only opening in this introduced Starvation Wall may properly be understood in comparison to this adult woman standing in it. This photo, also, was taken years ago. The introduced Starvation Wall has grown and grown.



And here are some photos from May 2017.



Remember, this
introduced
16 foot or
higher wall of
bushes
HIDES
THE
CHARLES
RIVER

It was
promised to be
a **LAWN TO**
THE RIVER.

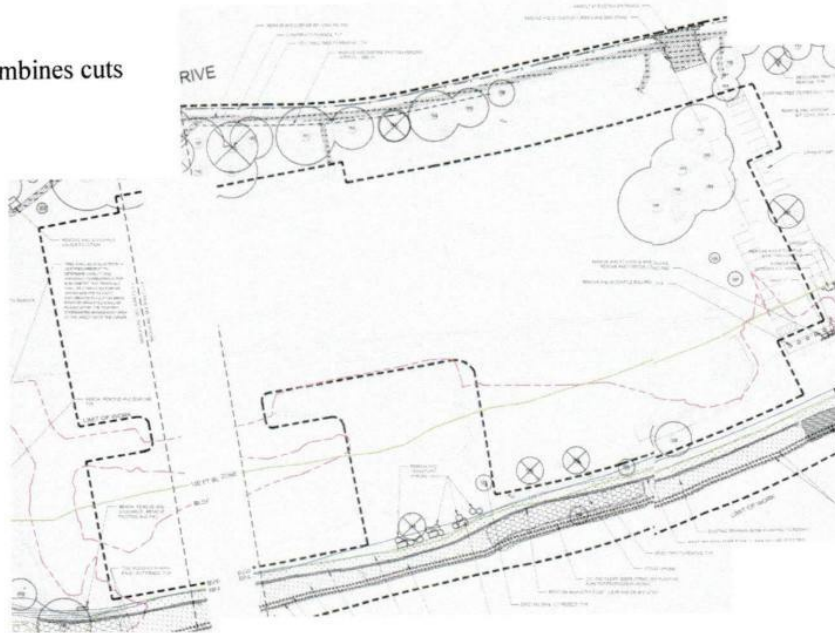
**Order 1 of April 24, 2017 continues the existence
of this outrage WHILE FUNDING MASSIVE
ADDITIONAL DESTRUCTION.**



6. The middle of the playing fields. Poison usage. Drainage for poisons that should not be used.

A. Maps.

The first map combines cuts from 3 masters.



At the left, bottom half, is the western introduced drainage area to drain off poisons which should not be there in the first place.

To the right of this introduced drainage area is a playing field segment connected by a throat to the main playing field.

To the right of this playing field segment is the east drainage area to drain off poisons which should not be there in the first place.

These areas are clearer in the colored plan.

B. Photos.

(1) Poison on the banks of the Charles River fails. So they want more poisons.

In the middle of the playing fields are excellent examples of the folly of poisons.



What is the solution for poison drinking grass which has failed? According to the DCR and the Development Department, the solution is to put in more poison drinking grass, and expand the poison drinking grass to the top of the hill, expand it to behind the pool; expand it to the area where Cambridge and the DCR have already destroyed hundreds of trees east of the BU Bridge. Expand the poison drinking grass in place of SUCCESSFUL, RESPONSIBLE grass which has survived the better part of a Century.



Why? The DCR loves poisons, and contractors get paid to put in poisons. Make work for contractors.

Responsible maintenance does not make money for contractors. Installation of poisons do make money for contractors.

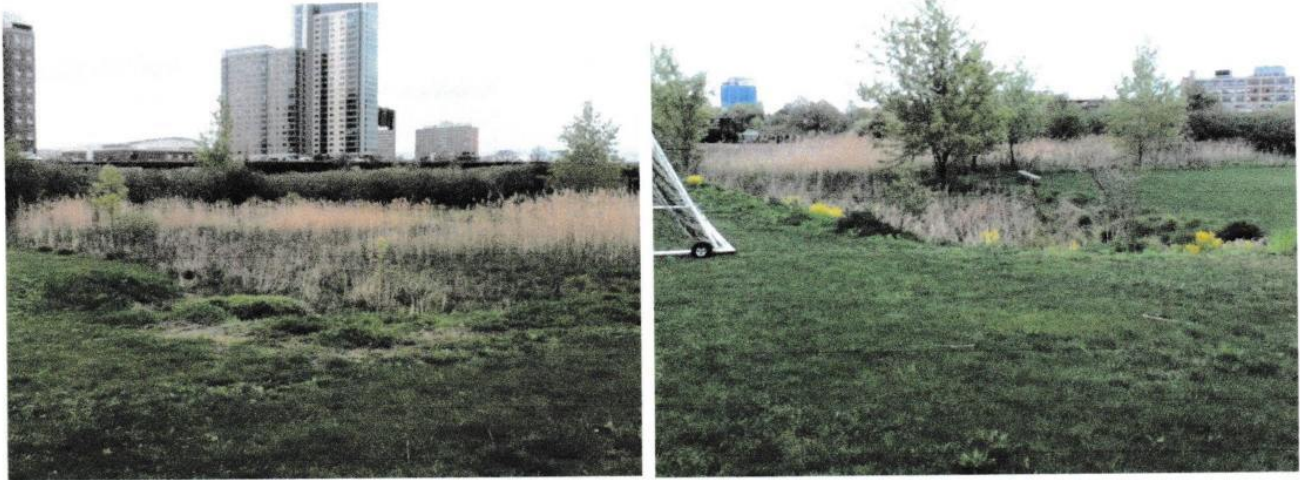
Responsible behavior is to get rid of all the poisons and to make Magazine Beach clean, as it was for the better part of a century before the Outrages of the 2000s by the DCR and Cambridge.

B. Fancy Drainage System to drain off poisons which should not be used in the first place.

And here, they paid contractors to put in a fancy drainage system to drain off poisons they should not be using on the banks of the Charles.

The contractors are happy. What else matters?

Responsible behavior would be not to use poisons on the banks of the Charles River.

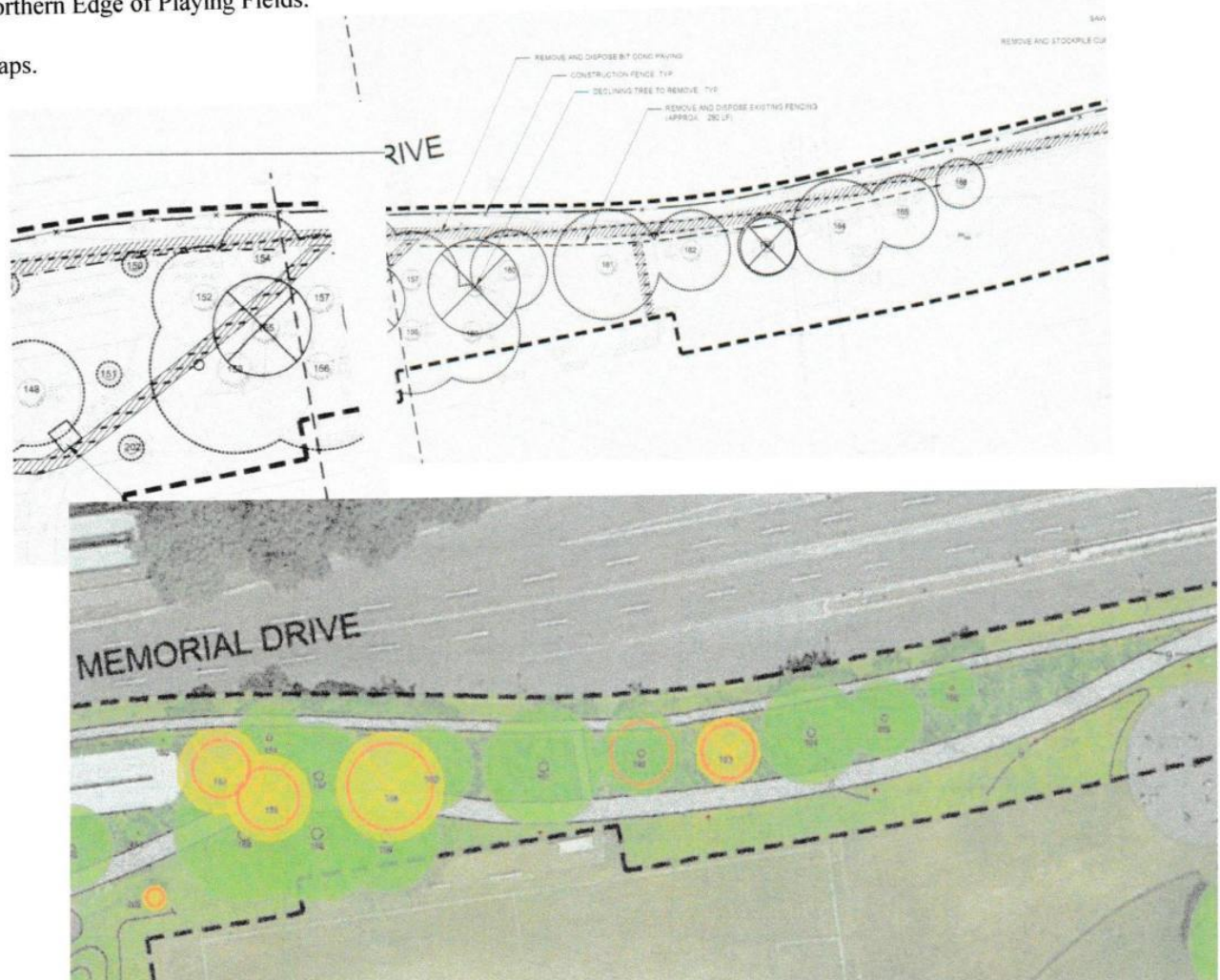


And Cambridge has a controlled fake protective group which has indulged in corrupt behavior to get things through AFTER LOSING WHEN THEY PRESENTED THEIR IDEAS TO THE PUBLIC. This is a soft touch for make work for contractors.

By contrast, the trees planned to be destroyed next to the private Boat House in the western part of the Magazine Beach Reservation got pulled off the list. The people in the private Boat House who would be hurt by that tree destruction are not controlled.

7. Northern Edge of Playing Fields.

A. Maps.



B. General Analysis.

This area is confusing. There may be more trees here than show in the plans, but the plans are consistent from one to the other.

The color package adds destruction of one tree located to the east of the pedestrian bridge (the grey item to the left) and one tree south of the eastern end of the pedestrian bridge, just above the line of the work area..

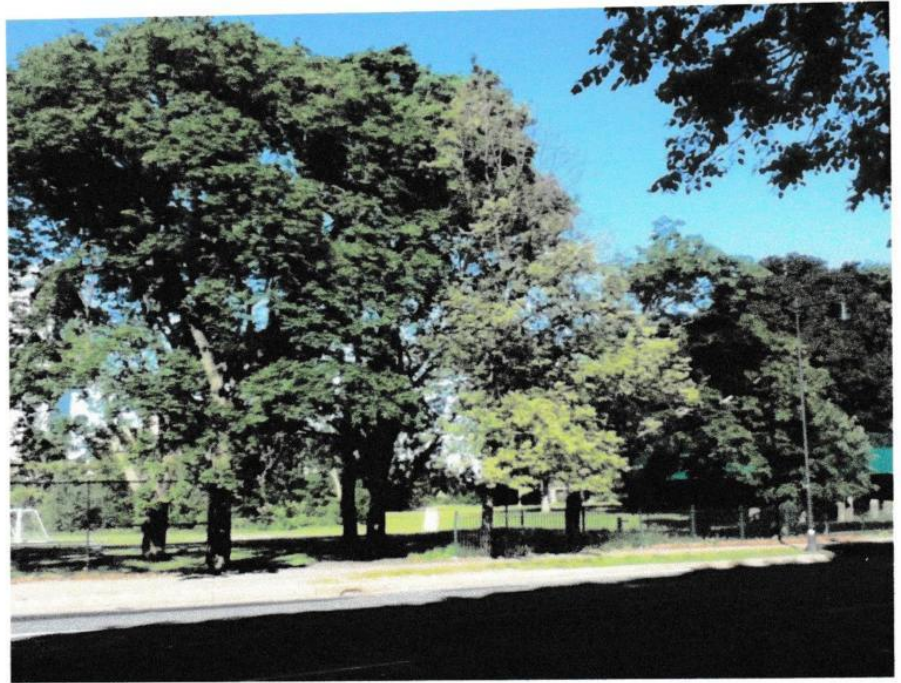
Reason for destruction? There may be one dead tree in the batch. The rest include trees which only have 50 years left to live.

C. Photos.

(1) General.

Here is the area from the Memorial Drive side.

The view to the right would be decimated.



I will take the question / issues from east to west.

(2) Eastern Portion.



The fourth tree from the eastern end is agreed to be destroyed on both the destruction plans.

Perhaps it is dying, but there is a lot of healthy tree there. The photo to the left was taken in May.

The lower photo from October shows its location. It is the tree on the right. It definitely is not dead.

The trees to its east (left) are as viewed in the right picture.



(3) Western Portion.

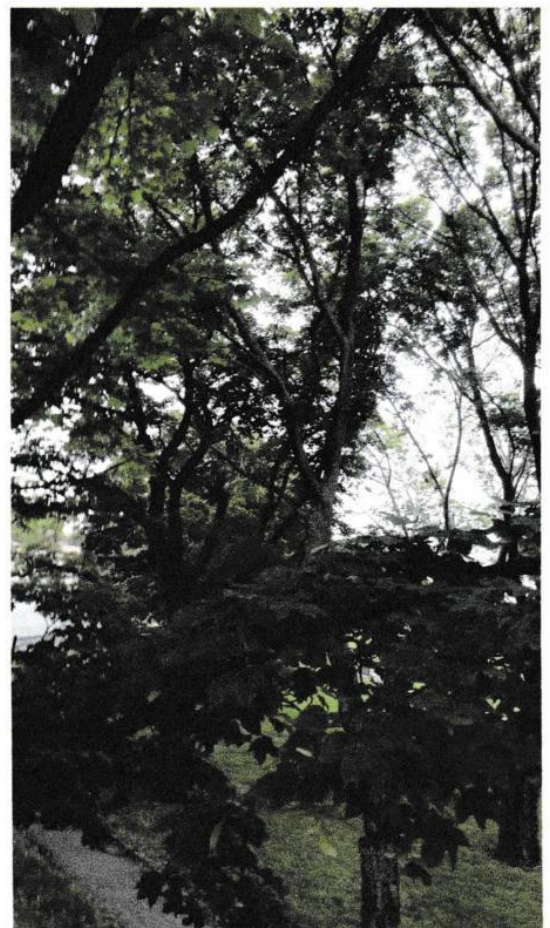
As we move west, we get into a group of very large trees. Their size and close proximity makes photography very difficult. Additionally, the lower branches have been commonly trimmed to allow for the close proximity of the grove of trees and their size. The second and third proposed to be destroyed, moving east to west were agreed to be destroyed by both plans. The fourth, added in the propaganda / color plan, towers over the pedestrian walkway. They all look excellent to me.

The biggest problem is making out the functioning branches particularly on the first one. These trees are SO big.

To the right is the first one of the three, the second proposed to be destroyed moving from east to west.

It is in the center of the photo. It does look as though its bark is split. That could be the concern. But, as Phil comments, trees grow through problems, and this is clearly an ancient, magnificent tree.

The next two doomed trees get even more distressing to see being destroyed. The pair is below. The limbs of the nearer (eastern tree, taken from the overpass, are below right.



The fourth tree in this group proposed to be destroyed, the furthest from the east, overwhelms the pedestrian walkway. Why this tree would be destroyed is inconceivable.

Are these irresponsible people "thinning" out the trees? Flat out nuts. But that was one of the many excuses used for the destruction of hundreds of trees east of the BU Bridge. The excuses rather clearly varied with what the listener would swallow.

Most of the photos in this report were taken in mid May 2017. I did not do as clear a job on location in taking these photos. So I am going back to early October 2016.

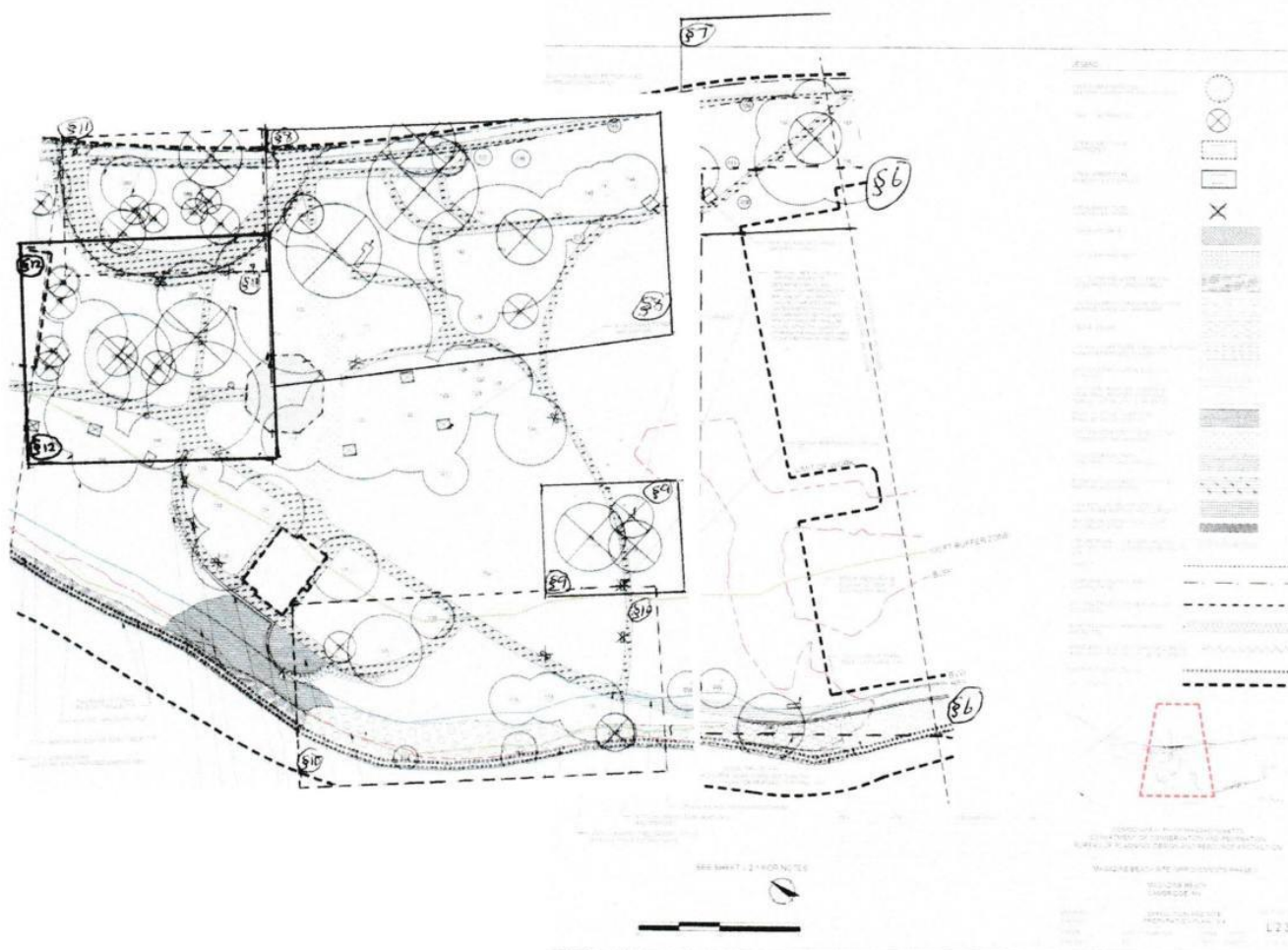
In the photo below, the green structure barely visible on the left at the middle is the pedestrian overpass.

I hope the dead tree front left is the one added to the destruction list, showing at the bottom left of the color plan. I think the two trees visible closest behind it, right and left are not doomed. The two further back are doomed, the pair I just mentioned, with the addition by the color plan on the left.



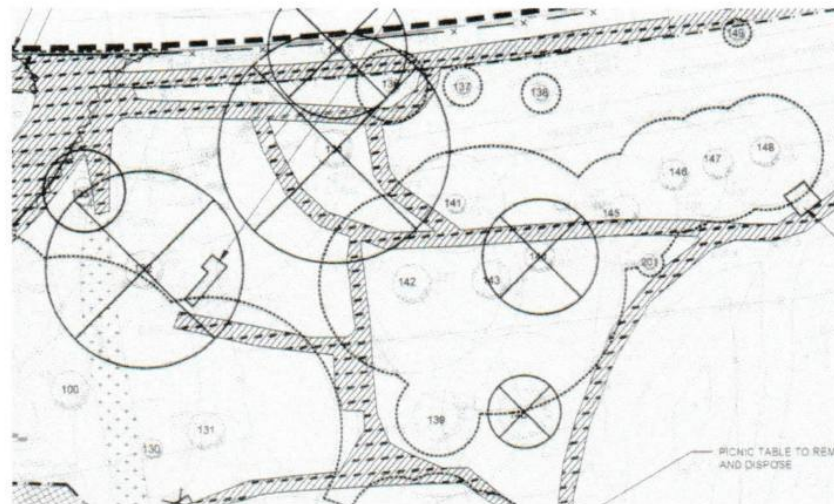
The lighted tree between these five and the field stands would appear to be doomed, the first tree in this current four tree analysis moving from east to west, in the upper right photo on the previous page.

Here are the two halves of the Black and White Plan for the Hill. Marked on the map are portions of the map which show in sections of this report from section 8 to 12. Areas in sections 6 and 7 extend into the right (eastern) portion below.



8. Northeast Hill, Northwest playing fields.

A. Maps.



B. General Analysis.

The color package adds destruction of one tree at the top of the hill from the playing fields, between one third and half the way from the top of the maps. They just keep destroying.

Translating the fraudulent word games, three of the six they do not even go through nonsense of claiming they have vaguely responsible excuse to destroy.

The fraudulent word games translate the red circles.

C. Photos.

(1) Tree at sidewalk.

One of these magnificent trees is doomed. It is admitted to be healthy and not to be in the group with less than 50 years left to live. It is at the top middle of the plans, and it is NOT THE LARGEST. It is east of the western warning structure for the pedestrian overpass, as viewed in a photo and the colored plan.

I cannot tell from the plans which is doomed. The plans show the turnaround of the pedestrian overpass to the left of these trees and the ramp between them and the next tree to be destroyed. This trees are admitted to be healthy and not beyond a day after its peak of beauty (translating the key fraudulent term, “declining”).

The plans, in general, have highly confusing parts. Not surprising, an excellent way to fool people. The doomed tree is either the tree on the left or the one on the right. The one on the right is in better shape and has even more years to live.



Other views of the “large” tree, on the left, and of the “small” tree, on the right.



(2) Tree at foot of pedestrian over pass.

This one is big and has the orange mark of doom in two locations.

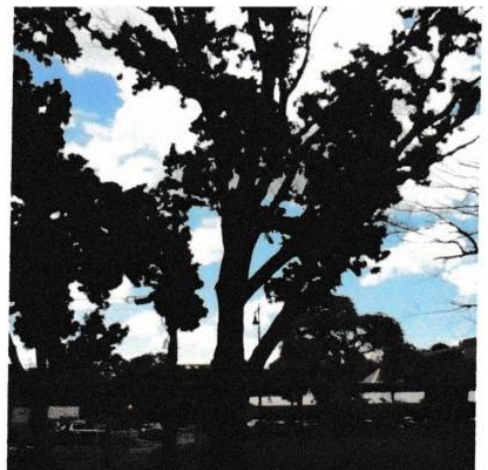
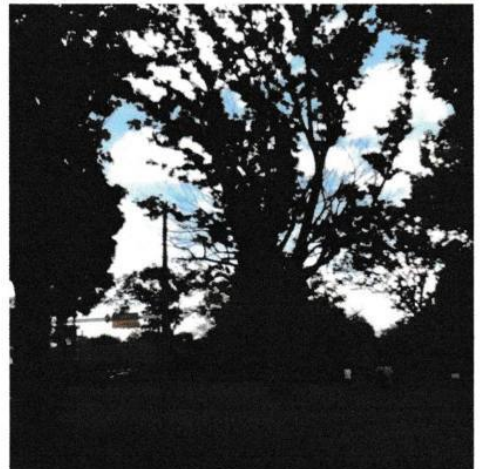
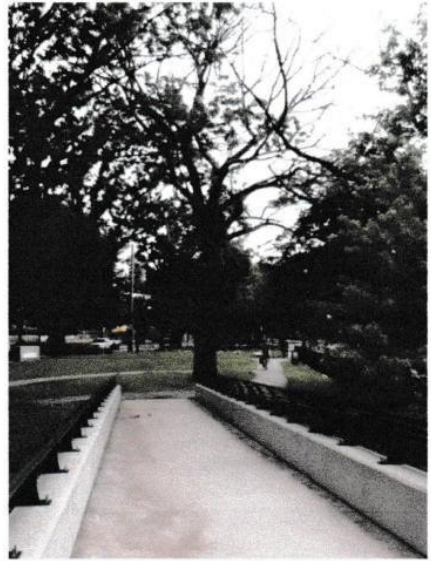
It could be the furthest west of the dead or dying trees. What is that 6? As justification for destroying 54? There are 3 more at the swimming pool bath house.

“Dead or dying” wound up in the order 1 motion, giving the lying impression that there were 54 dead or dying trees.

I hope that that motion was written by the Cambridge Development Department, and not by the two City Councilors whose names appeared on it.

(3) Tree Southwest of “Dead / Dying” tree.

This tree is really an extension of the massive trees which are south of the parking lot. But, looking at the map, it belongs in this group. A very difficult shot. The trees, unless, or until, the DCR and the Cambridge City Council get their way, are so thick they obstruct light.





(4) Tree southeast of "dead / dying" Tree.

Tree on the left, I think. Another problem with the terrible maps. This identification seems correct. The map shows another tree close to it but behind to the west, both visible from the pedestrian overpass.

(5) Tree east of tree in subsection 4 and near top of hill.

We are getting into relatively small trees at the top of the slope from the playing fields.

It does fit the slope markings.

Tree on the right looks healthy to me. Now they are destroying their own saplings. Incredibly, the propaganda map calls this tree beyond the instant after its maximum beauty or dead /diseased. Rather excellent demonstration of the bizarre reality of their word game, "decline."



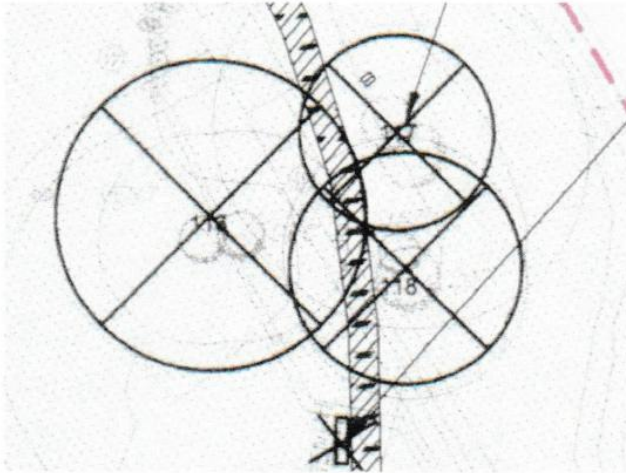
(6) Tree south of tree in subsection 4 and near slope of hill.

Another healthy looking sapling. According to the propaganda map, they have stated no reason to destroy it except for the destructiveness of the people involved.

The trees above this tree, subject to the destructiveness of the DCR and the Cambridge City Council, are so thick that I waited an hour until I had the right lighting to get this photo.

9. . Magnificent Grove on Hill, Overhanging Playing Fields.

A. Maps.



B. General Analysis.

The color package proposes no longer destroying 1 (two trees, Northwest group) of the 3 (10 trees) proposed to be destroyed. Looking closely at the original package, you will see recognized below the markings 6 or 7 trees rather than the 3 claimed. Phil Barber does an excellent analysis.

C. Phil Barber Analysis.

(1) Specific Analysis.

Here's my analysis, which I believe is correctly oriented W/S/E rather than by number

W group (two trunks). Sound, light pruning optional.

SE [five trunks standing]. One trunk is dead, to be removed. Another has dead limbs near the top which should be pruned to encourage new growth and retard the spread of disease.

NE [three trunks, widest lower branching of the group]. Dead limbs in the upper areas of two trunks, to be pruned to encourage new growth and retard the spread of disease.

(2) More General (Earlier) Analysis.

A couple of the trunks are weak and dying and should be pruned. Other than that I would leave them alone. I think there's one that looks iffy in each of the two larger stands, and some of the upper branches have died and should be pruned. I have a number of trees and bushes I've planted at my place and was initially horrified at the idea of severely cutting them back after taking so much care to see they survived, but they do flourish with such treatment.

It's certainly an outrage to destroy entire stands because of some deadwood or unsightly growth. I see this all too often, that trees that have valiantly survived the elements and abuse are cut down simply because someone judges them not to be sufficiently aesthetic. I imagine people who lack the awareness that these are living beings deserving of care simply see the bottom line, that it's cheaper to ruin an irreplaceable old tree and put in a new one, as if it didn't matter.

I've also seen city workers on the job in the various little parks and public landscaping hacking away willy-nilly at the vegetation blissfully unaware of the difference between weeds and plantings. The lack of concern, and of

knowledge, is appalling but such is our time.

Anyway thanks again for all your hard working protecting our resources.

D. Response to Phil Barber.

Please note that the portion of the grove (NE, upper right) that is not to be destroyed as of latest DCR comment needs work but not destruction.

The portion that Phil describes as essentially perfect (W, left) is slated for destruction. The other portion (SE, lower right) has one tree that needs to be destroyed, and a second with bad limbs.

Terrible department, terrible department.

E. Photos.

The photos in this section are from October 2016 unless stated otherwise.

(1) From a distance.





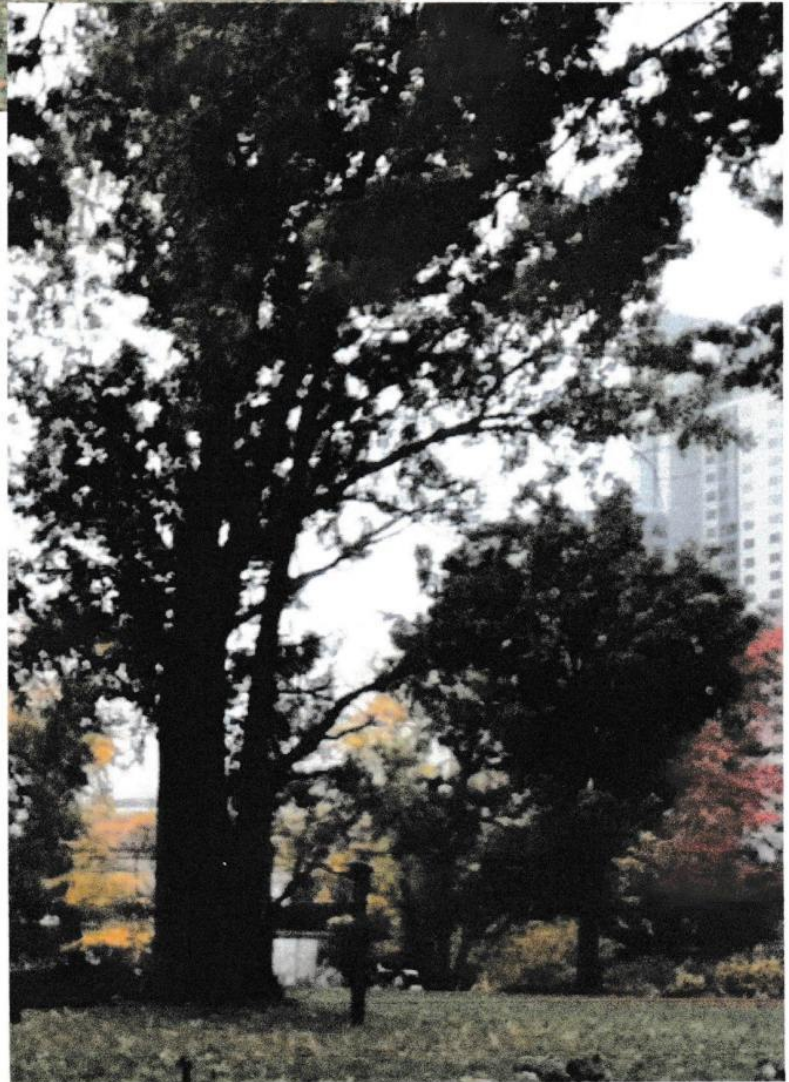
(2) The northeast group.



- (3) The southeast group.

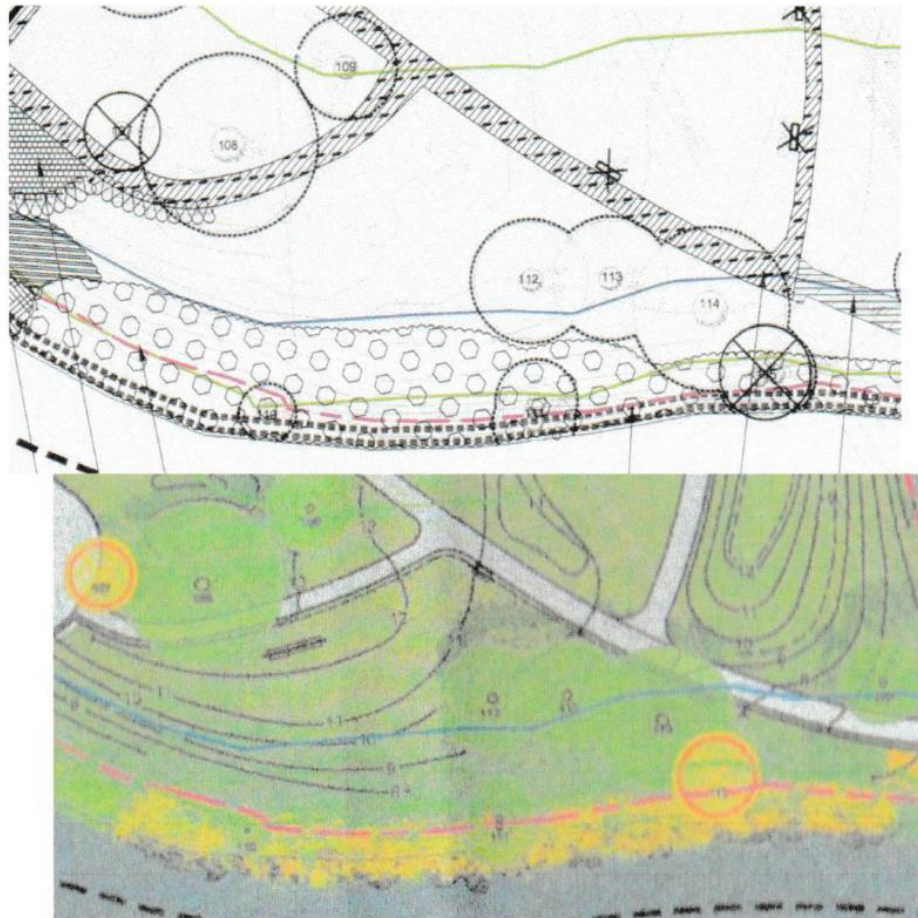


- (4) The west group.



10. Southeast Hill.

A. Maps.

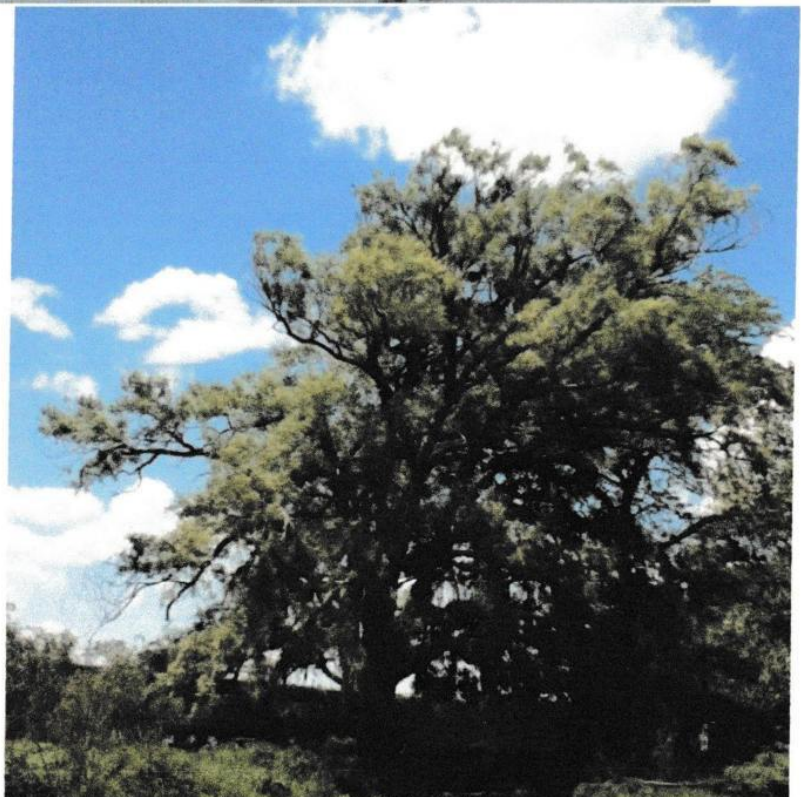


B. General Analysis.

There is confusion between the two maps with regard to the north - south walkway. The eastern of the two trees proposed to be destroyed does not seem to have changed in location. The tree at the bottom right dominates the playing fields at the river side to the same extent as OR BETTER THAN the immediately previous grove. It is magnificent.

C. Photos.

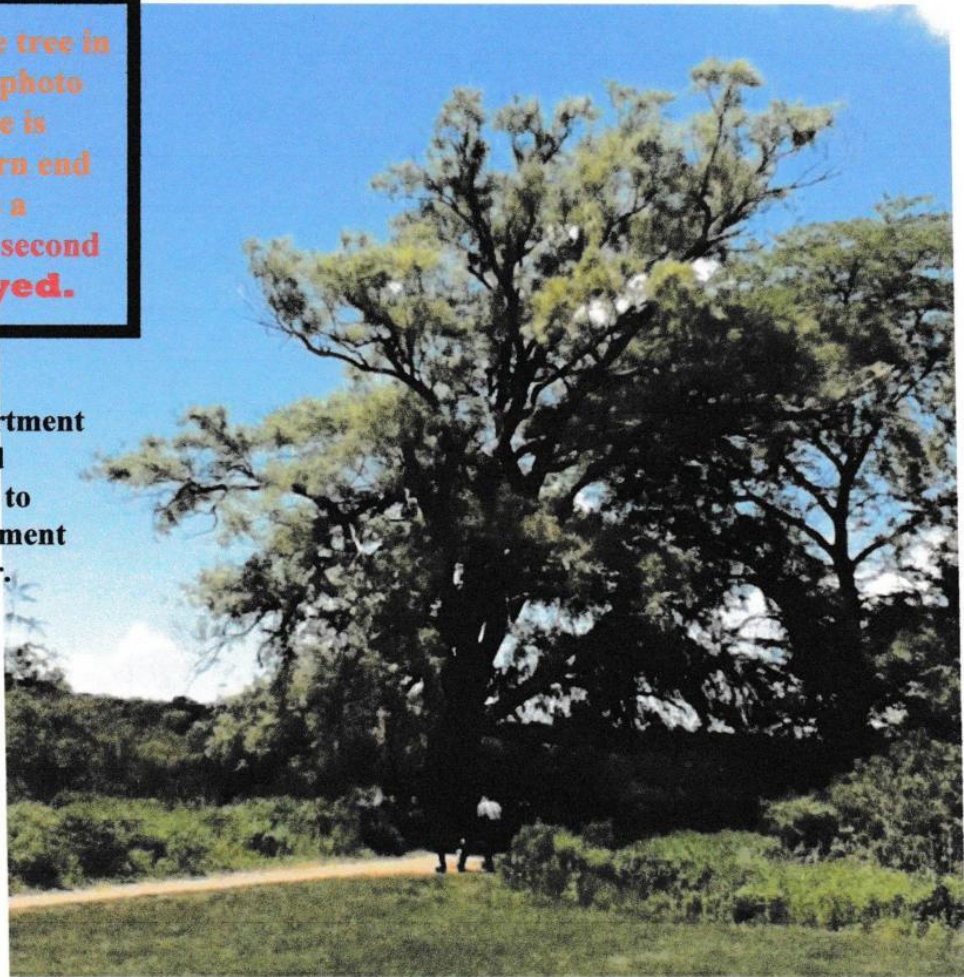
Absolutely magnificent, and doomed.



This is another view of the tree in the immediately previous photo on the river side. This tree is dominant at the far western end of the Playing Fields. It is a jewel, and is well worth a second look before it is **destroyed.**

I repeat. The Department of Conservation and Recreation is not fit to manage the environment of the Charles River.

The other tree in this hill south area seems to be planned for destruction because it has the wrong pedigree.

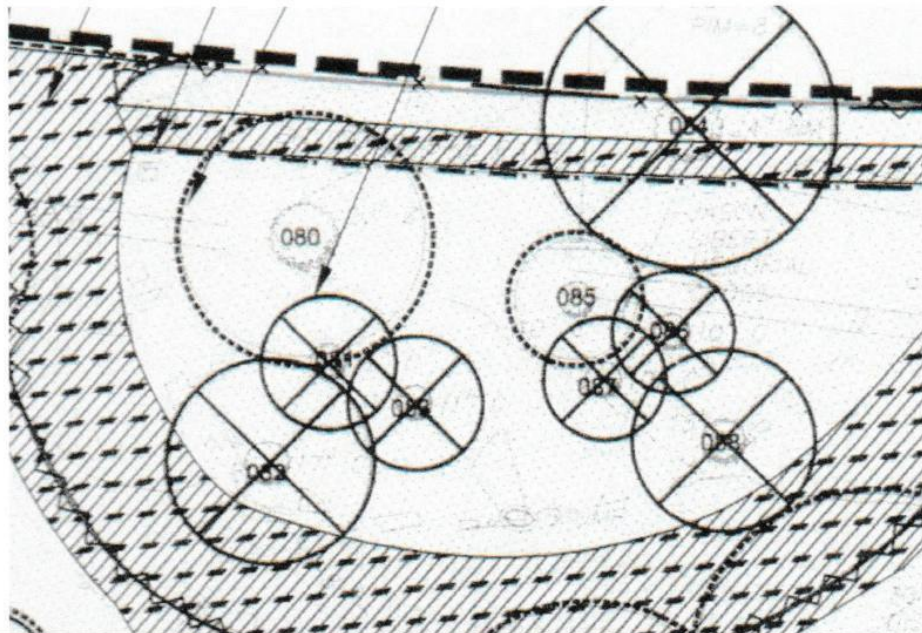


Looking at the map, it is to the far left, next to the building that has been abandoned for 80 years that the fake neighborhood association has been telling people is the ONLY THING ON THE CHARLES THAT PEOPLE SHOULD BE LOOKING AT. The 80 year abandoned building that the fake group has been telling people is the only thing on the Charles to look at is in the rear of the second shot.



11. Hill, Parking Lot.

A. Maps.



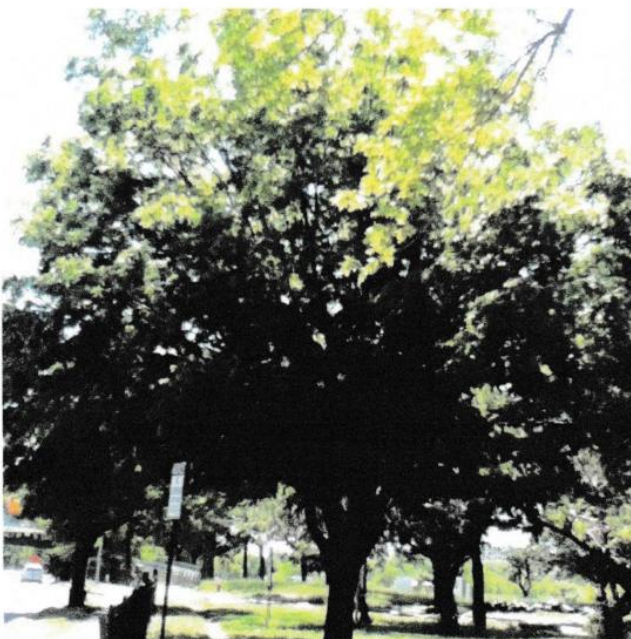
B. General Analysis.

The proposal goes from destroying all but two trees while destroying this parking lot to destroying all but one tree.

C. Photos.

First of all, after the change in the propaganda piece, the tree at the bottom left is the ONLY tree in the hill parking lot, the DCR and order number 1 of April 24, 2017 do not want to destroy.

A distance shot from the west. Note the curb cuts, and note the size of the street tree. EVERY tree between the curb cuts but the one on the far right front is doomed.



On the left is the only tree NOT BEING DESTROYED in this doomed Little Guys Parking Lot. It is the first tree to the left of the near curb cut.

On the right is the doomed street tree in front of this doomed parking lot grove, looking west from beyond the left curb cut in the above picture.



View .from the east.

Everything you can see between the internal roadway and Memorial Drive will be destroyed. The internal roadway will be destroyed. Parking not destroyed will be drop off only.

This is yet another tactic in gentrification, given the lower economic status of people whose picnic area will be destroyed.

The only safe tree is on the far end and not readily visible.

And LARGER trees to the rear and to the left which create the great view are doomed.





And it gets much worse. The big trees to the left, south, of this view are impossible to fully communicate in photos because they get in the way of each other. **THEY ARE THAT BIG.**



From across the street, last October.

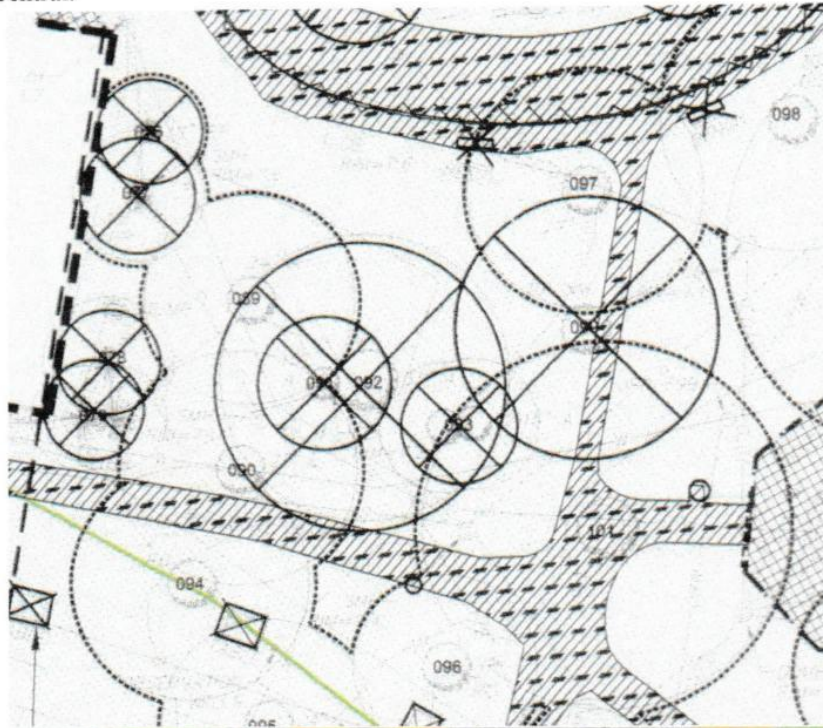
Very nice view of the street tree, on the left. Pretty much everything except for the right hand tree in the parking lot area is to be destroyed.

Destruction supported by the DCR and the Cambridge City Council **includes significant trees to the rear of the doomed parking lot**, as analyzed in detail below.



12. Hill, West Central.

A. Maps.



B. General Analysis.

The DCR and the Cambridge City Council order 1 of April 24 want to destroy the row of four trees east of the lot line of the swimming pool. The propaganda piece admits that every one of these trees is healthy and has not reached that stage in its life cycle which is the DAY AFTER THE DAY IT REACHES PERFECTION OF BEAUTY.

The apparent reason is that they want to put in picnic tables, and they find trees offensive to their picnic tables. These picnic tables combine with destroying the parking lot used by people picnicking. So the mentality is the usual fraud, except that, since they are not publicizing this reason, they are lying to themselves.

Immediately to the right of this row of unchallenged healthy mature doomed trees is a row of three trees which the DCR and the Cambridge City Council are kind enough not to destroy.

East of this row of three is a magnificent grove of four, two of whom are so good that they a major part of the beauty of this excellent park, looming over the parking lot grove, of which the DCR and the Cambridge City Council want to destroy every tree but one.

C. Photos.

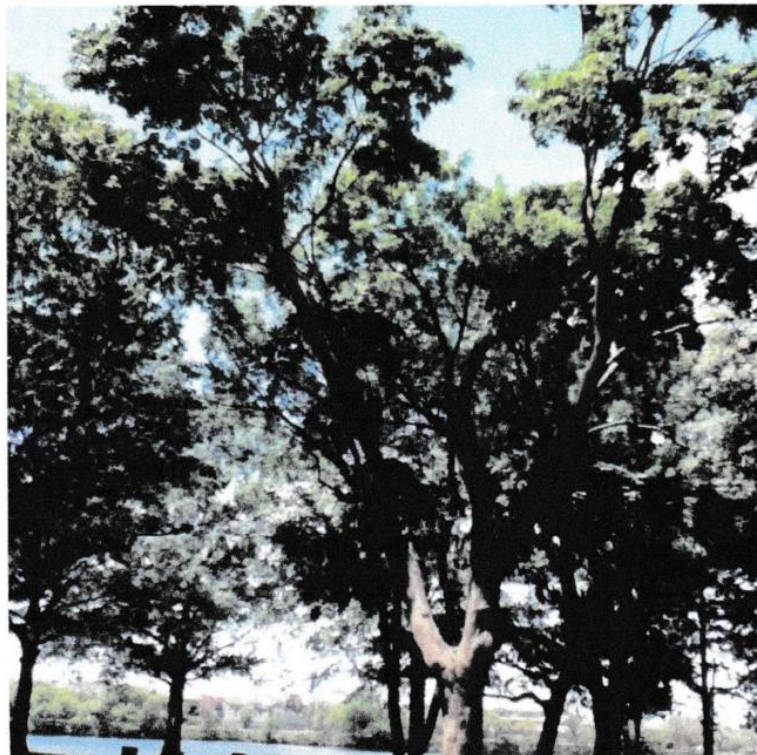
(1) The row of four.

The admittedly healthy four which the DCR and Cambridge City Council want to destroy, apparently to install picnic tables simultaneously with destroying the parking for picnicking is on the right, the middle of the picture.

The three they are not interested in destroying is on the left.

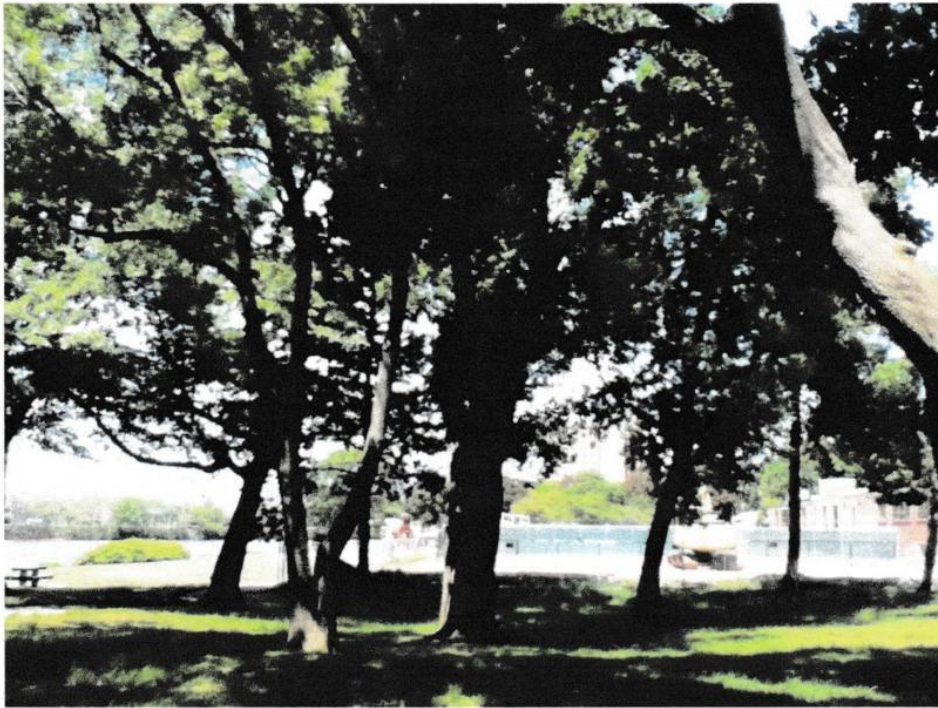
(2) The Central Four.

These four are to the left of the trees on the left in the photo, and behind the doomed parking lot grove.

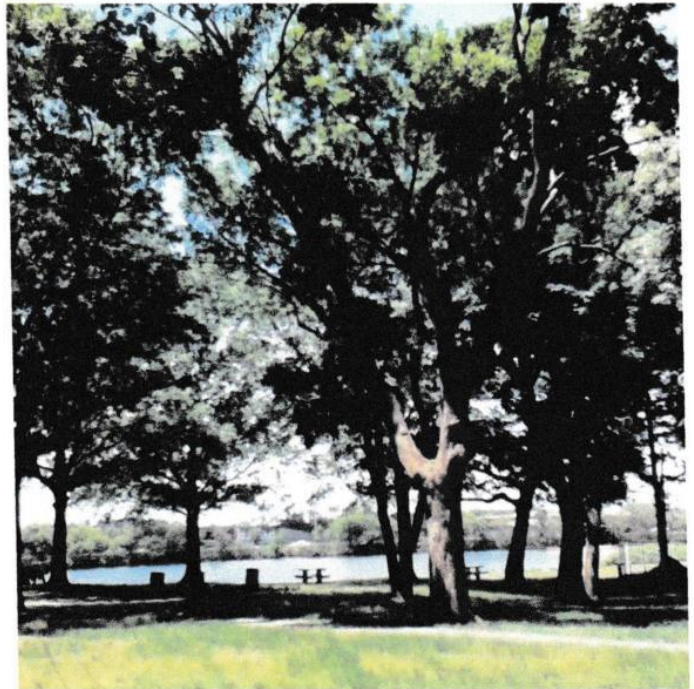
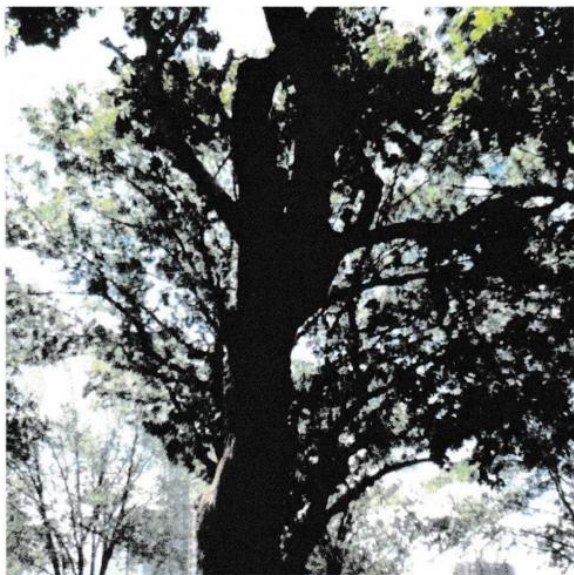


Here is a view of the doomed four from the front / Memorial Drive side.

And from the east, with the swimming pool in the rear..

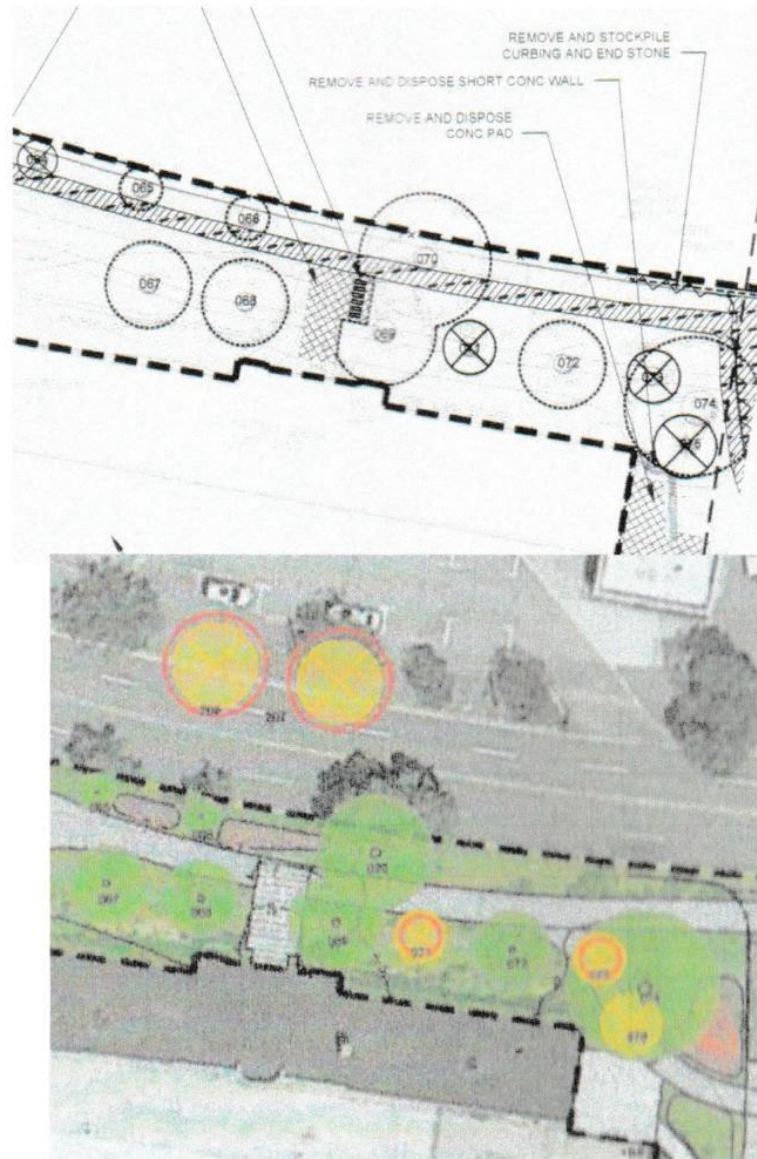


From the river side, and then the Memorial Drive side again.



13. Bath House Northeast, MicroCenter South.

A. Maps.



B. General Analysis.

The colored version adds two trees for destruction on the edge of MicroCenter, not in the Magazine Beach Reservation. Note that the tree closest to the parking lot outrage is admitted to be healthy and, perhaps, have more than 50 years of life left. It is probably being destroyed out of a bizarre sense of synchronicity. Massive, irresponsible destruction on the parking lot, why not destroy this as well? Fake protective group will protect another contribution to the contractors.

Note, however, that this area really is not part of the parkland. Thus supposed “dead or dying” or beyond the day after the day of peak beauty trees claimed are pure and unadulterated padding of numbers.

Additionally, all trees proposed to be destroyed in the western part of the pool area are ADMITTEDLY healthy. So the DCR would love to discuss the trees in this section.

C. Photos.

(1) MicroCenter Trees.

First two trees in this photo are being destroyed.

The fake protective group loudly tells people to look at bushes and the 80 year abandoned building, and not to look at all the trees they are destroying. In fact, they go out of their way to prevent discussion of the trees they are destroying.

WITH ALL THE OMISSIONS,
THEY STRONGLY TELL
PEOPLE TO SUPPORT THEIR
“LOVELY” PROJECT.

This is part of the fraudulent aspects of Development related matters under the three member City Manager machine.

The stuff to be ashamed of has always hidden with maximum skill. I call that fraud and malfeasance in office.

My words are slightly more blunt than the three judicial entities in the Monteiro case, “reprehensible,” “ample evidence of . . . outrageous misbehavior,” triple penal damages by the jury. But that was heartless destruction of a woman’s life because she worked for women’s rights.

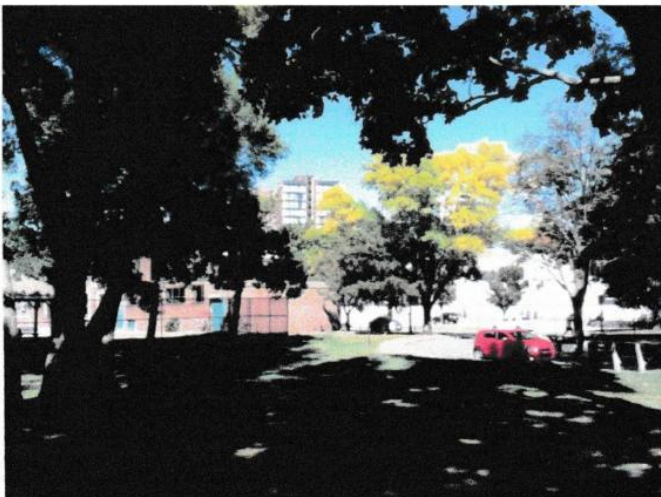
(2) Trees in front of and at the eastern end of the
Swimming Pool Bathhouse.

I must apologize for the shortcomings of this section. 3 trees are being destroyed. I really have not evaluated them.-These photos are from October 2016.

Looking at the map, I hope the tree being destroyed on the right is the dead/apparently dead one left of the main door. Another one, still less than ten in total and not in the park.

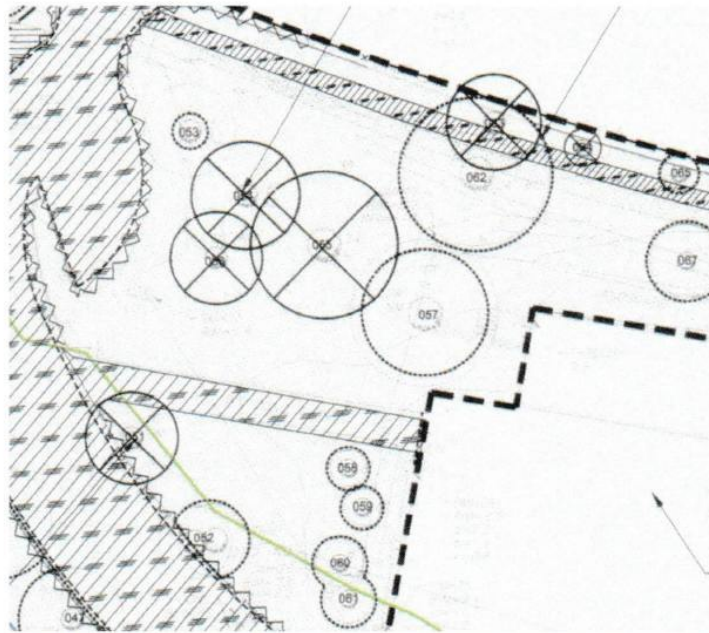


Corner next to the beautiful park. I hope the two destroyed on the color map are the small ones under the big gold tree. One is healthy and young.



14. Swimming Pool West, Across from MicroCenter Parking Lot.

A. Maps.



B. General Analysis.

The colored change adds a fifth tree to the west of the four trees facing the MicroCenter parking lot slated for destruction. The added tree and EVERY OTHER TREE IN THIS AREA ARE admittedly healthy trees not beyond their peak, and not even claimed by the fraudulent word games to be worthy of destruction sought by these horribly irresponsible people.

They want to move the parking lot. In their bizarre world, it is better to have people on Memorial Drive looking at a parking lot than looking at excellent trees with more than 50 years of life remaining.

NOTE, HOWEVER THAT TREES IMMEDIATELY WEST OF THIS AREA NEXT TO THE BOAT CLUB HAVE BEEN REMOVED FROM PROPOSED DESTRUCTION. That is what happens when you have a real protective entity, as opposed to the Cambridge Development Department type fraud which is telling people not to look at what they are destroying WHILE KEEPING MASSIVE DESTRUCTION SECRET, loudly proclaiming how great their plans are.

C. Photos.

Here is the ADMITTED magnificent, healthy grove not a day or so beyond perfect beauty that the DCR and the Cambridge City Council want to destroy to move a parking lot to the frontage at Memorial Drive. This doomed magnificence is directly across from the MicroCenter parking lot.

MicroCenter is in the rear (October photo). Second photo is from the MicroCenter side in May.



The tree to the left in this photo appears to be a SIXTH admittedly excellent tree proposed for destruction in this area, although the maps are confusing.

The goal is to line Memorial Drive with parking lots at this point and put new saplings way out of view.

Great for the contractors, lots of Make Work, and an excellent example of one reason why the legislature destroyed the Metropolitan District Commission.



And here is a view of that grove from the far side of the sixth(, or seventh) ADMITTEDLY HEALTHY AND PROPERLY AGED TREE which the DCR and the Cambridge City Council want to destroy across from the MicroCenter. (October photo)

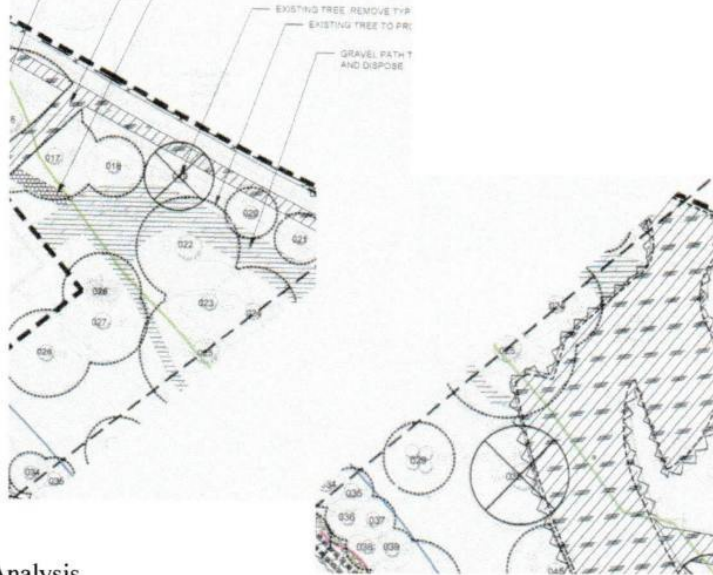
Note that the propaganda piece, as is too common, presents confusion concerning too many doomed trees and the areas around them. The color map seems to have moved the location of this doomed tree. I am doing the best I can with terrible materials to work with.



These supposed lovers of the environment are destroying these trees to make Memorial Drive dominated by parking lots at this point.

15. Area 12, Boat Club Area.

A. Maps.



B. General Analysis.

In striking contrast to EVERY OTHER segment of the plan. ALL trees (2) proposed to be destroyed are not being destroyed in the color propaganda plan.

Trees formerly proposed to be destroyed, looking at the color plan, would appear to be (1) near the top center and between the two paths, and (2) toward the bottom center, the free standing tree.

Another very clear pattern. ALL trees between the bathhouse and the boat club were admitted even in the fraudulent word games to be healthy and NOT BEYOND PEAK BEAUTY, refusing to use the fraudulent word games to describe the latter.

What is the key difference?

The existence of a fake group controlled by the Cambridge Development Department keeping the destruction as secret as possible in the rest of the plans to the east of here, and the existence of a responsible protective group at the Boat House.

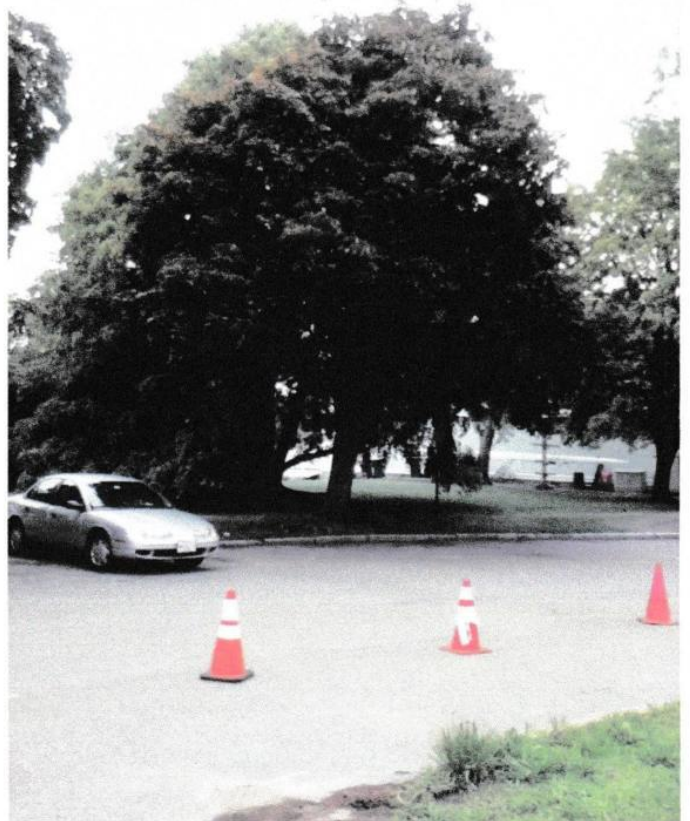
FRAUD, FRAUD, FRAUD. That is the name of the game. When fraud works, irresponsible plans get rubber stamped.

C. Photos.

(1) Tree east of Boat Club.

This tree is off the parking lot that the DCR and the Cambridge City Council want to move ON TOP OF EXCELLENT TREES WHICH THE DCR ADMITS ARE HEALTHY AND ARE NOT A DAY OR MORE BEYOND THE HEIGHT OF PERFECTION.

The big difference is the Boat Club is not a fake protective group controlled by the Cambridge Development Department.



The tree is saved under the propaganda change to the plans, IN CONTRAST TO TREES IN AREAS CONTROLLED BY the fake protective group.

This tree is off the parking lot that the DCR and Cambridge want to move ON TOP OF EXCELLENT TREES WHICH THE DCR ADMITS ARE HEALTHY AND ARE NOT A DAY OR MORE BEYOND THE HEIGHT OF PERFECTION.

The propaganda amendment to the plans admits that this tree, like the ones the propaganda piece wants to destroy around that parking lot, is healthy and is not a day or more beyond peak beauty.

(2) Tree east of the Boat Club and next to the sidewalk.

This tree is a few feet away from the entry to the parking lot that the DCR and Cambridge want to move ON TOP OF EXCELLENT TREES WHICH THE DCR ADMITS ARE HEALTHY AND ARE NOT A DAY OR MORE BEYOND THE HEIGHT OF PERFECTION.

The big difference is the Boat Club is not a fake protective group controlled by the Cambridge Development Department.

The tree is saved under the propaganda change to the plans, IN CONTRAST TO TREES IN AREAS CONTROLLED BY the fake protective group controlled by the Cambridge Development Department. No trees "protected" by the Development Department's friends were saved in the propaganda change..

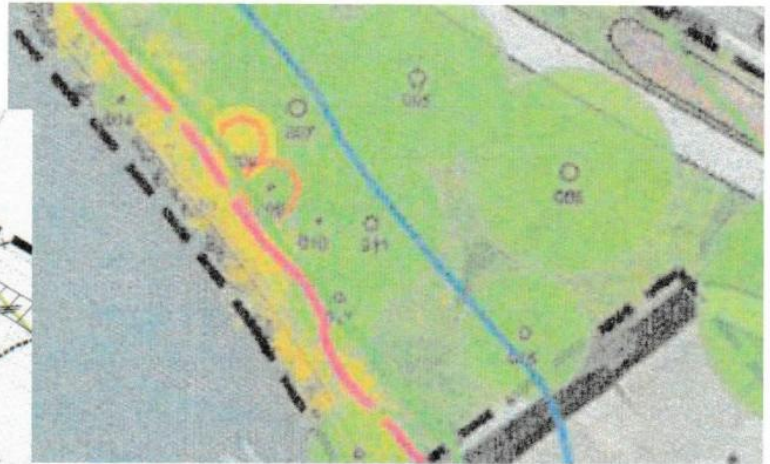
The propaganda amendment to the plans admits that this tree, like the ones the propaganda piece wants to destroy around that parking lot AND MANY OTHER PLACES, is healthy and is not a day or more beyond peak beauty.



The propaganda piece admits that all of the trees in front of the Boat Club, LIKE THE ADJOINING TREES THEY AND THE CITY COUNCIL WANT TO DESTROY, are healthy and are not a day or more beyond peak beauty. Attached is a group shot from last October.

16. West of Boat Club.

A. Maps.



B. General Analysis, photos.

One tree is proposed to be destroyed in both plans. The real reason is probably as part of a fancy frontage proposed at the waters edge.



The maps indicate the 4th tree from the Boat Club property line, presumably a plastic wall which parallels the building.

This is the tree. It looks quite good to me. It looks healthy and NOT A DAY OR MORE BEYOND ITS PEAK MATURITY (secret and undisclosed definition of "declining"). Reality is so inconvenient.

17. Conclusion.

The fraud and corrupt tactics by which the fake group which calls itself a neighborhood association has fought for this outrage shows the corruption which existed under the prior three city managers. This entity rather clearly is associated with the Development Department. In the Monteiro case, you have an example of THREE OUTSIDE ENTITIES condemning the situation under the prior City Managers by condemning outrageous behavior by the middle of the three member City Manager machine.

EVERY public demonstration of support for Order 1 OMITS all of this proposed destruction because ALL OF THIS DESTRUCTION has been kept secret by the fake "neighborhood" group lying that it is protecting the world. "Supporters" of order 1 are supporting bushes and a building which has been abandoned for 80 years.

There is NO MEANINGFUL SUPPORT for the outrage of the DCR / Cambridge plans.

Their only public communication of plans for Magazine Beach to the public came in the fake group's January 2013 meeting in which the outrage was rejected by responsible people. A vote was delayed to the February meeting which was held on April 23, 2013, after driving responsible people away and keeping the final date of the February meeting as secret as possible. Clearly much more secret than the meeting at which the string pullers lost.

A highly complex motion was kept secret on April 23, 2013, until the last 10 minutes of the meeting and a vote of the few people not driven away by the scheduling was forced in those 10 minutes with the mantra, NO TIME, NO TIME.

The very real support for responsible behavior was "reversed" by corrupt tactics and by corrupt maneuvering of the agenda.

The corrupt maneuvering of the agenda subsequently included holding far less than their previous monthly meetings persisted until the string pullers felt safe in resuming a normal schedule.

There is NO MEANINGFUL SUPPORT for this outrage, not even in the few people who have not been driven away by the tactics.

Kill the outrage, get rid of the DCR in favor of MassDOT, clean up the Development Department and the controlled "protective groups" which date back to 1974 when James Leo Sullivan promised to create his own system of groups. I have the gut feel, not knowledge, that Sullivan was fired in the 1960s because of MEANINGFUL ORGANIZATIONS standing up to him.

END THE OUTRAGE.

Sincerely,

Robert J. La Trémouille, Individually, and as
Chair, Friends of the White Geese

Attachments:

Original plans marked to indicate the locations provided above.

Prior submittals: City Manager copies of #1 to 3 provided after entry into office, on November 16, 2017. Dates are date hand delivered to City Manager / City Clerk as stated.

0. Email communications, from the placement of the work office in 2015 to the end of January 2016, up to 3 or more times a week, particularly extensive during the destruction in January.
1. Governmental Destruction on the Charles River, October 5, 2017, City Manager copy delivered promptly after commencing employment.
2. Governmental Destruction on the Charles River, Late 2016, Part 2, City Manager copy delivered promptly after commencing employment.
3. Charles River Destruction 3, the Magazine Beach hill, DVDs of destruction accomplished so far, November 1, 2016, City Manager copy delivered promptly after commencing employment.
4. April 5, 2017. Update on the Destruction of Memorial Drive by Cambridge and the DCR, part 4.
5. April 19, 2017. Update on the Destruction of Memorial Drive by Cambridge and the DCR, part 5, proposal to destroy direct access to River Street Bridge from Soldiers Field Road / Storrow Drive Westbound.
6. May 1, 2017, Update on the Destruction of Memorial Drive by Cambridge and the DCR, part 6, massive tree destruction proposal around the pool, heartless animal abuse, use and expansion of poisons.
7. Email of May 10, 2017 through City Clerk, Charles River - Skillfully worded fraud becomes absolute truth and "request" for destruction, corrected. Copy direct to City Manager's email.
8. Letter of May 17, 2017, More detail on the April 24, 2017 vote (Order 1) by City Council to destroy at Magazine Beach.
9. Letter of May 30, 2017 to CEO / Secretary of Transportation responding to City Council order number 1, May 22, 2017.